

Annual Report 2020

LONDON
SCHOOL of
HYGIENE
& TROPICAL
MEDICINE





“LSHTM demonstrates exceptional leadership in global health and continues its extraordinary efforts to enhance knowledge transfer through capacity-building of public health professionals in developing countries. As a leading public health institution, it is no wonder why many public health students from Africa continue to pursue their advanced studies at the LSHTM, in hopes of returning to the continent to build a stronger, safer Africa.”

Dr John Nkengasong
Director of African Centres for Disease Control and Prevention



“LSHTM is a remarkable institution – it has a long history yet is constantly reinventing itself and looking to the future. Since joining MRC I have learned a great deal from Peter Piot and my colleagues in the MRC Units in The Gambia and Uganda. It is a privilege to work in partnership to improve human health through world-class research.”

Professor Fiona Watt
Executive Chair of the Medical Research Council



“Amidst the fog of uncertainty and distrust brought upon by the COVID-19 pandemic, LSHTM continues to be a shining beacon of reason and leadership, directing the very best public health research and education to help countries and communities around the world to identify effective and culturally-appropriate strategies grounded in evidence, equity, and humanity. This is possible only because of the trust built from decades of interactions between LSHTM’s academics working on the ground, in jurisdictions across six continents that often have the greatest health needs, with public health implementors and policy makers. Keep up the exceptional work LSHTM, you are truly an inspiration to public health institutions worldwide!”

Professor Teo Yik Ying
Dean of the Saw Swee Hock School of Public Health, National University of Singapore

Contents

Foreword	2-3	Education	11-12	Financial summary	18
Research	4-8	Staff community	13-14	Organisation	19-20
School Centres	9	LSHTM on the global stage	15-16	Progress powered by philanthropy	21
Partnerships	10	Innovation	17	Thank you	22-23

Foreword

2020 has been a historic and indeed a transformative year for the world. It will long be remembered for the tragic consequences of the COVID-19 pandemic, for the renewed emphasis on racial and other forms of inequality, and as an unprecedented year for scientific progress and collaboration.

The COVID-19 pandemic is the greatest challenge in peacetime for more than 100 years. It has touched every part of our global community. Never before has our School’s mission, research and education been so vital and I am proud of the way we have stepped up to the challenge.

Our experts have been at the forefront of national and international efforts, from modelling the spread and impact of the virus, to tracking attitudes and sentiments around vaccines, to revealing the extent of the harsh inequalities in society that COVID-19 has exposed.

Our COVID-19 free online course (or MOOC), developed rapidly in the early phases of the outbreak, ended up reaching over 208,000 participants around the globe. And I was so proud to see the efforts of LSHTM alumni who have been leading response efforts in their own institutions and countries around the world.

I am proud that we have been able to secure high quality education throughout the pandemic. This was undoubtedly a particularly challenging year for both our student body and our teaching staff who deserve all our thanks for all their hard work and dedication in adapting to the rapid transformation to digital learning in truly unprecedented circumstances.

Aside from the direct impact of COVID, we remain resolutely focused on other major health challenges including, of course, the escalating climate crisis and its impact on health. As we prepare for next year’s UN Climate Change Conference of the Parties (COP26), our Centre on Climate Change and Planetary Health will play a key role in continuing to generate evidence-based solutions for planetary health whilst also promoting feasible actions to increase our School’s sustainability.

We welcomed a new Chair of Council this year, Don Robert, who is also also the Chairman of the London Stock Exchange Group (LSEG). Don Robert brings a wealth of experience in global business operations, leadership, innovation and governance, that will be of tremendous benefit as we further strengthen our research, teaching, and partnerships around the world.

Joining as independent members of Council this year we also welcomed Mohamed Osman of Spring Impact and formerly of the Elton John Foundation; Angela Darlington, CEO of Aviva and Mike Turner of the Wellcome Trust. Mishal Khan and Effua Usuf joined as elected members of Council and I am particularly pleased that we now have a Council representative from the MRC Units.

My thanks to our outgoing Council members Jon Roper, Ann Grant, Richard White and Alison Grant for their excellent contributions over the years and also to John O’Donnell for serving as Acting Chairman of Council.

This year we have been making important strides in our commitments to equality in our School. It is vital that we continue to examine and act on inequity, both inside and outside of LSHTM. Our Council and Senior Leadership Team is fully committed to delivering meaningful action, some of which is already underway, including but not limited to, the establishment of a new Diversity and Inclusion Committee (a committee of our Council), reviews of our bullying and harassment policy, improving our understanding and teaching of our colonial history and more. I look forward to further engagement with the wider School community as this critical work progresses.

2021 will be my last year serving as Director of LSHTM to a position that I have been enormously privileged to hold. The challenges that we have faced this year have underscored the importance of our community. We deeply appreciate the generous support of our philanthropic donors that have continued to enable us to offer scholarships, improve our buildings and critically, to expand our research worldwide. To our staff and students thank you for your extraordinary dedication and commitment to improving health worldwide.

Thanks to unprecedented and rapid scientific breakthroughs we now have vaccines to control the COVID-19 pandemic. Therefore we can look forward to 2021 with renewed hope and optimism.



P. Piot

Professor Peter Piot KCMG
Director, LSHTM

Foreword

It is a great honour to become Chair of the London School of Hygiene & Tropical Medicine. Joining in April 2020 in the midst of a global pandemic has highlighted just how important this unique institution is, and the critical role played by our talented staff and students. In the past year, LSHTM's work has been more visible than ever before, and our world-class research and expertise are serving not only to address the most urgent and pressing health challenges, but are also playing a key role in shaping a better and more prepared post-COVID-19 world.

The past year has been a time of great uncertainty as we all come to terms with the changed reality of COVID-19. We have had to rapidly navigate and adapt to new patterns of work, living and learning. But the importance of our enduring mission to improve health and health equity in the UK and worldwide remains central to all we do. I'd like to thank all those who work at and with LSHTM for their dedication, innovation and professionalism, which makes everything we do possible.

I have been particularly struck by the strength of our global alumni community and its overwhelming response to the pandemic over the last 12 months. Not only can our graduates be found leading the response in governments, NGOs, hospital wards and in vaccine rollout, but an unprecedented number are supporting their alma mater by volunteering to mentor students, participating in crowdsourced modelling, joining us virtually for events, and donating to support students in need. This terrific response is indicative of the quality and depth of teaching that students receive and the impact that connections forged at LSHTM can have for decades to come.

As a leading voice during the pandemic, we now have the opportunity and obligation to build upon our wealth of expertise and experience during this crucial time for global health. Looking ahead, it is evident that how the world now prepares, reacts and responds to global challenges will define whether we're on a sustainable trajectory. Issues such as pandemic preparedness, climate change, chronic conditions and infectious disease bear on every aspect of our existence from

national security and global stability to the economy, people's lifestyle and livelihoods, mental and physical health and life expectancy.

Our ambitious new initiative – Securing the Future of Global Health – will significantly reduce the human and economic cost of the greatest threats of our age. The initiative encompasses our two newest centres, the Centre for Epidemic Preparedness and Response, and the Centre on Climate Change and Planetary Health. To achieve this, we will need to raise £53 million, helping us to create the necessary capital infrastructure and to recruit the rising stars and more established leaders in the relevant fields. We are eager to take on this fundraising challenge in 2021.

LSHTM is uniquely placed to research, inform and advocate on a global scale to mitigate the impact of the global health threats which affect everybody, but so often disproportionately affect the most vulnerable and disadvantaged in our society. We also recognise that inequalities within our own School need to be urgently addressed and I am pleased that this essential work is now underway as a priority for our Council.

We have much to be proud of in 2020 and I am grateful for the leadership of our Director, Peter Piot, during such difficult times. Peter has overseen a period of great transformation at LSHTM during his tenure, and as we now enter his final year as Director, he leaves our School in a unique position to make a real difference to the health of all in our forever changed world.



Don Robert
Chair of Council, LSHTM

Research

LSHTM's expertise ranges from the molecular to the global, the theoretical to the applied, the analytical to the political. In 2020, our scientists published more than 3,100 research articles, of which around 600 were on COVID-19. Here is a selection of highlights from across the Faculty of Epidemiology & Population Health, the Faculty of Infectious & Tropical Diseases, the Faculty of Public Health & Policy, MRC Unit The Gambia at LSHTM, and the MRC/UVRI & LSHTM Uganda Research Unit. Many of our research outputs are produced in collaboration with partners in the UK and around the world.



3rd in the world public health (1st in the UK)

ShanghaiRanking's Global Ranking of Academic Subjects 2020

UK's top university for the proportion of academic research with women listed as authors, and third in Europe for publishing open access research

2020 CWTS Leiden Ranking

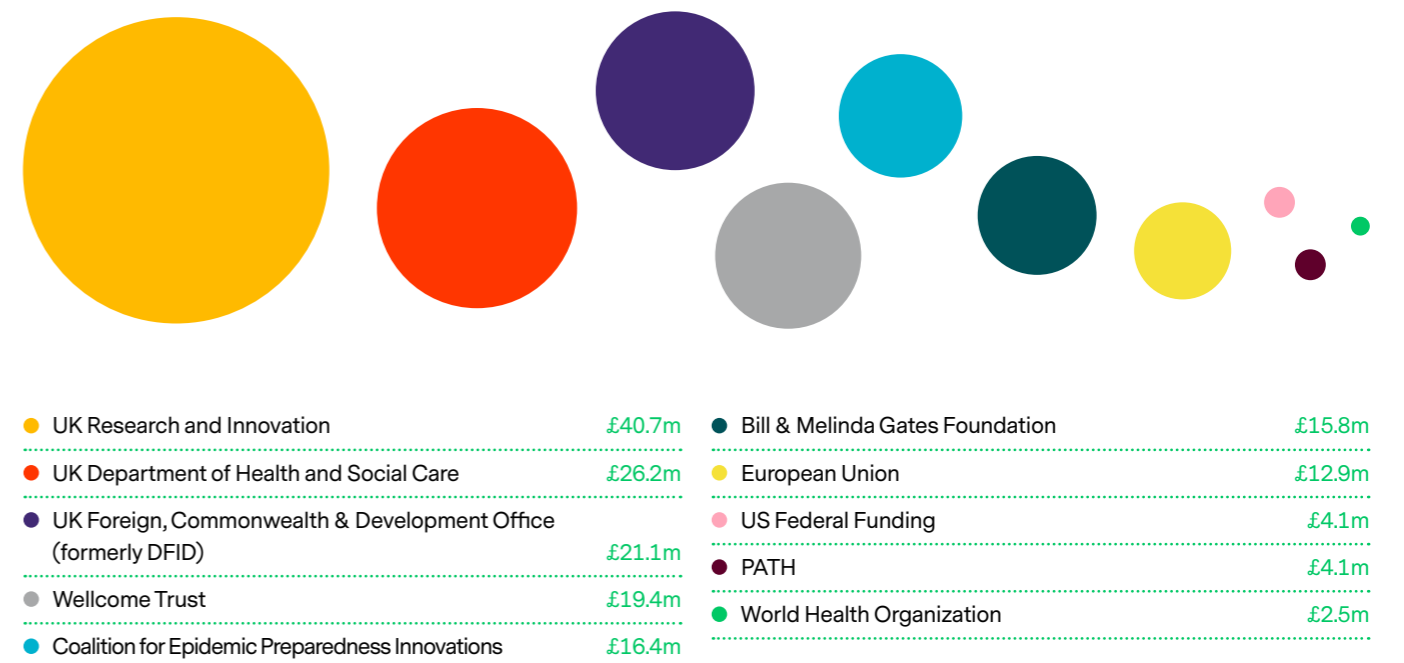
3rd in the world for public, environmental & occupational health, 4th in the world for infectious diseases, 11th in the world for social sciences & public health

US News Best Global Universities Ranking 2021

Total value of new research grants awarded to LSHTM 2019/20:

£181.2m
London £149.2m
The Gambia £20.2m
Uganda £11.8m

Top funders for new research grants awarded to LSHTM 2018/19



Income from new research grants is phased over a number of years according to the grant duration. Research income data for 2019/20 is shown on page 18.

Research

Focus on: COVID-19

LSHTM researchers from across the globe are working around the clock to generate vital data on **COVID-19 and its potential impact**. The scientific community has shown an unprecedented combination of dedication, collaboration and transparency to help tackle the crisis, and LSHTM is proud to be at the forefront of the response.

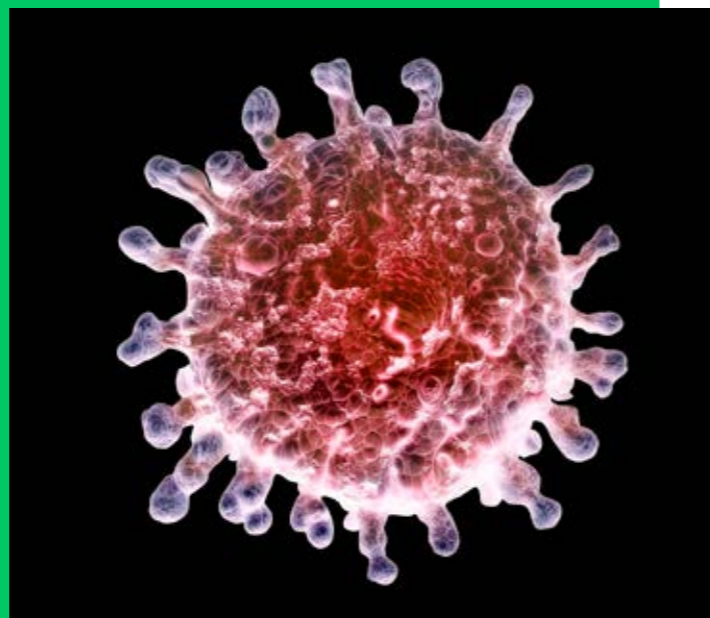
Understanding how transmissible COVID-19 is, and how quickly it might spread, was **crucial information for policymakers** in the early days of the pandemic. The estimates generated by our world-leading mathematical modellers supported governments to make evidence-based decisions on how best to protect their citizens and control the disease.

The modelling team's output is vast, including showing that backward contact tracing could help double the effectiveness of the UK's NHS test & trace system, revealing the urgent need for routine immunisation to continue during the pandemic, and examining potential **response strategies for African countries**.

Working with partners in Hong Kong, LSHTM led analysis of a long-haul flight that provided the first genetic evidence of **in-flight transmission** of the SARS-CoV-2 virus. In May 2020, a new analysis of the worldwide effort to sequence the coronavirus genome revealed the scale of the genetic changes that were occurring in the virus as it was spreading across the world.

Launched in the Spring, the **'Hygiene Hub'** links science to action to help save lives during COVID-19. Simple hygiene practices are one of most effective measures to reduce transmission of the virus. However, hygiene habits and policies vary around the world greatly, depending especially on available resources. This online portal, hosted by LSHTM, provides 'real-time' support and latest evidence for hygiene intervention actors around the world, assisting on the development and execution of potentially lifesaving strategies.

Experts in The Gambia and Uganda continue to support government and continental COVID-19 responses. In Uganda, the MRC Unit and partners evaluated SARS-CoV-2 **rapid diagnostic tests and PCR kits**, and generated the first Ugandan SARS-CoV-2 full genomes through rapid local sequencing. This helped Uganda to understand the disease, and monitor and control virus transmission. The Unit is also securing test reagents and personal protective equipment on behalf of the World Health Organization (WHO) in support of the national testing effort.



In The Gambia, our MRC Unit ran the country's only COVID-19 **diagnostics centre** and remained so until June 2020 when the National Public Health Laboratories began testing, following technical and equipment support from the Unit's laboratory team. The Unit provided crucial clinical care for COVID-19 patients and produced 3D-printed PPE and cloth face masks in collaboration with local businesses. The Unit continues to support the Gambian Ministry of Health's preparations for a national COVID-19 vaccination programme.

In March 2020, The **UK Public Health Rapid Support Team** deployed to Africa CDC (Ethiopia), WHO Western Pacific Regional Office (the Philippines) and WHO Nepal to support the COVID-19 response.

However, the stopping of flights and rapid closure of borders globally, meant the team quickly adapted to remote working, continuing the support they had initiated with colleagues overseas.

This **coordinated package of remote support** has continued alongside in-person deployments where possible. These include to Bangladesh to assist WHO's Sub Office in Cox's Bazar, and to The Gambia, to support the Ministry of Health to conduct a joint rapid assessment on COVID-19 response with colleagues from Africa CDC.

This is just a snapshot of the work of our staff, students and alumni in tackling the COVID-19 pandemic.

Find out more at [lshtm.ac.uk/coronavirus](https://www.lshtm.ac.uk/coronavirus).

Infectious disease

Antiretroviral therapy is failing to treat one-third of **HIV** patients in a Malawi hospital, according to research published in *The Lancet HIV*. Dr Ankur Gupta-Wright and colleagues called for new rapid tests to combat HIV drug resistance in sub-Saharan Africa. In Uganda, an African-led trial launched to test two ways of preventing HIV at the same time. The PrEPVacc trial with Chief Investigator Prof Pontiano Kaleebu is evaluating the provision of both HIV vaccines and pre-exposure prophylaxis (PrEP) at the same time.

TB cases and deaths were predicted to spike due to COVID-19 as a result of disruptions to health services and delays to diagnosis and treatment. Dr Finn McQuaid and colleagues estimated at least 110,000 additional

deaths from TB in China, India and South Africa unless health services are maintained and strengthened.

A 100-year-old malaria mystery was solved using neuroimaging techniques. Dr Sam Wassmer and colleagues found that **cerebral malaria** causes death in adults by triggering oxygen-deprivation in the brain. The findings pave the way for neuronal survival-enhancing approaches to be trialled alongside existing anti-malarial treatments. Meanwhile, giving **preventive drugs** to school-age children in Africa was shown to halve malaria infections and cases of anaemia. The research was published in *The Lancet Global Health* by Dr Matthew Chico and colleagues. With 400,000 deaths from

malaria every year, preventive drugs could be an important tool alongside insecticide treated bednets and a malaria vaccine.

Infecting *Aedes aegypti* mosquitoes with *Wolbachia* bacteria reduces their ability to transmit the **dengue** virus. Dengue is the most rapidly spreading mosquito-borne disease in the world. Prof Nicholas Jewell was the statistician on The World Mosquito Program's gold-standard trial in Indonesia, which demonstrated a 77% reduction in the incidence of virologically-confirmed dengue.

Genome sequencing shed light on the re-emergence of the bacterium that causes Yaws, a neglected tropical disease of the skin, bones and joints. Research from Prof Nick Thomson and colleagues published in *The Lancet Microbe* found that re-emergence of Yaws just a few years after a mass drug administration elimination campaign was caused by three distinct types of the bacteria. This was likely the result of latent infections in asymptomatic individuals who didn't receive treatment. The results have important implications for Yaws disease control strategies and surveillance.

In The Gambia, a new, affordable **pneumococcal conjugate vaccine (PCV)** was found to be safe and effective in adults, toddlers and infants in phase 1/2 trials. PCV vaccines protect children from pneumonia – one of the leading causes of death in children under five – but their high cost makes them difficult for low- and middle-income countries to afford. Dr Ed Clarke and colleagues' findings support the progression of this lower cost PCV to phase 3 trial and licensing.



Mosquito collection in Indonesia. Credit: World Mosquito Program.



A field worker uses a thermal imaging camera to measure mother and her unborn baby's temperature in Keneba, The Gambia, as part of a study looking at the impact of heat stress on health. Credit: Louis Lesson/LSHTM



Environment, climate change and health

Daily exposure to ground level ozone in cities worldwide is associated with an increased risk of death but stricter **air quality standards** could prevent thousands of deaths each year. Research from Professor Antonio Gasparrini in *The BMJ* highlighted the urgent need for stricter regulations on emissions, and a global commitment to reduce ozone pollution.

A detailed map of air pollution across Great Britain was revealed using **artificial intelligence** and satellite technologies. Currently, scientists rely on often inaccurate ground-based monitors to measure air pollution, but the innovative technique from Dr Rochelle Schneider and colleagues could help revolutionise our understanding of how air pollution affects the nation's health. The team next intend to combine the data with local health records and use epidemiological analysis

to reveal a highly granular picture of the association between air pollution and health outcomes across Great Britain.

An evaluation of England's heatwave plan found most excess deaths and hospital admissions in hot weather took place outside of the plan's **heatwave alert periods**. The findings from Prof Nicholas Mays and colleagues suggest efforts to reduce the adverse effects of hot weather should focus on the summer season rather than heatwaves alone.

Over the last fifty years **global food supply** has changed dramatically, resulting in stark differences in food systems and diets around the world. New research from Dr Rosemary Green and colleagues has improved our understanding of global food supply patterns and could help boost health and sustainability. The team's

mapping of multidimensional patterns provide important new evidence on the changing global food system. This paves the way for detailed estimates on the environmental impacts such as on soil nutrients, water systems and greenhouse gas emissions around the world.

Research from Dr Pauline Scheelbeek and colleagues in italics found one third of UK fruit and vegetables are imported from **climate-vulnerable countries**. The team to call for a radical rethink of trade strategies to ensure people in the UK have continued access to fruit and vegetables. Also in the UK, the first analysis of the UK government-recommended 'Eatwell Guide', published in *BMJ Open*, found the diet could reduce your risk of dying early and lower your environmental footprint, but too few people are following the guidelines.



Chronic conditions and diseases

Using **machine learning** to predict survival for patients with life-shortening conditions was found to be as effective as using traditional statistical methods. Professor Ruth Keogh and colleagues applied machine learning to cystic fibrosis registry data. Their results show the method can now be applied to other conditions that have health-related administrative databases.

Screening entire populations for breast and ovarian cancer gene mutations

could prevent millions more breast and ovarian cancer cases across the world compared to current clinical practice. Dr Rosa Legood and colleagues also found that **cancer gene testing** is cost effective in high and upper-middle income countries.

Every month delay in **cancer treatment** was estimated to raise the risk of death by around 10%, in research published in *The BMJ* by Dr Ajay Aggarwal, and colleagues. The findings are important

for understanding of the impact of cancer treatment delay caused by the COVID-19 pandemic.

HPV vaccination was found to prevent 26% more cervical cancer cases and 51% more deaths than previous estimates, in research by Dr Kaja Abbas and colleagues published in *The Lancet Global Health*. The team urged for more African countries to introduce and scale-up HPV vaccination.



Health systems and economics

A new report has found the health and future of every child and adolescent worldwide is under immediate threat from ecological degradation, climate change and exploitative marketing practices that push heavily processed fast food, sugary drinks, alcohol and tobacco at children. The authors of *A Future for the World's Children?*, including Dr Dina Balabanov and Dr Timothy Powell-Jackson, highlighted that progress had stalled and called for **inclusive health systems**

and social institutions to combat persisting inequalities.

Analysis of stock market returns by Dr Cherry Law and colleagues found the **sugar levy** had no lasting negative impacts on the UK soft drinks industry, despite widespread industry fears the tax would harm their businesses. The levy was introduced as part of the UK Government's plan to address childhood obesity and related conditions such as diabetes and heart disease.

British households purchasing high volumes of sugary or diet drinks were more likely to have low socio-economic status, higher body mass index and less healthy food purchases. The insight into shopping habits from Dr Nicolas Berger and colleagues study in *PLOS Medicine* should help support the design of better targeted approaches to reducing sugar consumption, and ultimately **improve health**.



Health across the life course

One **stillbirth** occurs every 16 seconds and COVID-19-related health service disruptions could worsen the situation, potentially adding nearly 200,000 more stillbirths over a 12-month period. In the first ever joint UN estimates on stillbirths, Dr Hannah Blencowe and colleagues found that without urgent action, 20 million more babies will be stillborn by 2030. They called for concrete investment and dedicated efforts to strengthen policy and programmes.

Identifying anxiety in those with depression could be key to developing successful **mental health** programmes in low- and middle-income countries. Using data from a trial of the Friendship

Bench in Zimbabwe – where counselling sessions are delivered by lay health workers on a wooden bench within the grounds of a clinic – Dr Dixon Chibanda and colleagues found that persistent depression is more likely in those who also experience symptoms of anxiety.

The largest global **vaccine confidence** survey revealed hesitancy hotspots and found that public confidence in vaccines varies widely around the world. The Vaccine Confidence Project found signs that public trust may be improving in parts of Europe, but several countries experiencing political instability and religious extremism were seeing growing scepticism that vaccines are safe.

A new way of giving tranexamic acid (TXA) through intramuscular injection could help frontline responders save the lives of **trauma victims**, according to research from Prof Ian Roberts and colleagues. TXA prevents severe bleeding after injury by inhibiting blood clot breakdown but previously required intravenous injection. As every 15-minute treatment delay reduces its lifesaving potential by 10%, the new method of intramuscular injection could greatly expand access to urgent treatment, especially in low- and middle-income countries where most trauma deaths occur.

School Centres

Cross-institution networks of academics, collaborating and innovating to address global health challenges.



Centre members have contributed evidence on the impact of COVID-19 on chronic conditions, including the effect on cancer survival, health systems, and healthcare workers. We're also developing guidance for adapting health services for chronic conditions in humanitarian crisis settings. We've created a database of COVID-19 and chronic conditions resources on our website.

@LSHTM_CGCC



Placing mental health on the global agenda.

2020 highlighted inequities and power imbalances that contribute to mental, neurological and substance use conditions and the inadequate voices given to those with lived experience. CGMH is scaling up our work in humanitarian settings, on co-production, mental health implications of COVID-19, and decolonising GMH.

@GMentalHealth



Research and advocacy to end TB.

TB Centre airborne disease experts played pivotal roles in COVID-19 policy and planning, as well as clinical support, across multiple countries. Members also conducted several major surveys and modelling analyses of the impact of COVID-19 disruptions on TB services and burden.

@LSHTM_TB



Our members have been analysing the spread of the COVID-19 pandemic since the earliest days of the outbreak. Their insights into patterns of transmission, behavioural responses and control measures have informed the global response, and our data and analysis are open to collaborators around the world.

@cmmid_lshtm



The COVID-19 pandemic has impacted the emergence and spread of drug-resistant pathogens globally, due to pressures on healthcare services, the treatment of COVID-19 patients with antibiotics and social-distancing measures. This year the AMR Centre has been gathering the evidence as it emerges and contributing to research and discussions on this complex relationship.

@LSHTM_AMR



We developed a popular COVID-19 vaccine tracker to map the progress towards vaccines against SARS-CoV-2; studied the impact of the pandemic on routine immunisations globally; surveyed the acceptability of COVID-19 vaccines in the UK and explained to the public how vaccine trials are actually done, how we know that vaccines are safe and what's in them.

@LSHTM_AMR



The Centre has grown substantially this year, forging a Planetary Health Fellowship scheme with Stanford University and planning a Planetary Health MSc. The Centre co-hosted a highly successful planetary health conference in The Gambia and contributed to major external events including London Climate Action Week and the 'Race to Zero' campaign.

@LSHTM_Planet



Improving global health practice through evaluation.

Since the emergence of COVID-19, the Centre has been approached by numerous organisations seeking advice on good evaluation design for different community-based responses to reducing transmission. We have held several participatory evaluation design workshops to "crowd source" ideas and suggest appropriate methods.

@LSHTMEvaluation



Improving the health of populations affected by humanitarian crises.

We launched the COVID-19 Humanitarian Platform, in collaboration with partners, facilitating knowledge exchange and hosting guidance documents for humanitarian actors. This equips field workers with the tools and resources to appropriately respond to the pandemic.

@LSHTM_Crises



CSM organised several events on causal machine learning, including a 1-day Masterclass, and a public lecture by Prof Mark van der Laan (joint with Alan Turing Institute). The Centre also held a popular series of seminars on COVID-19 and statistical methodology, which included a talk by Professor Sir David Spiegelhalter.

@LSHTMstatmethod



Providing an authoritative academic voice on malaria.

A year in which seasonal preventive treatment - a control method pioneered by LSHTM and West African researchers, now implemented annually in 13 countries - was shown to have halved malaria deaths in children.

@LSHTM_malaria



Contributing to historical understanding of public health policy and practice.

We continued our research into LSHTM's colonial past and developed lectures for staff and students on the historical context of 'decolonising global health'. We also developed historical analysis relevant to the COVID-19 pandemic through talks, articles and funded research.

@LSHTMhistory



TAGC has expanded the genomics environment at LSHTM, allowing access to high-throughput sequencing technologies and analytical methods to understand the 'omics underpinning non-communicable and infectious diseases. We seek to enable localised solutions, particularly in Africa and Asia. The Centre organises monthly clinics, has an 'omics data analysis course, and co-organises monthly seminars.

tagc.lshtm.ac.uk



Improving health of women, children and adolescents worldwide

Focusing on the collateral impact of COVID-19, we worked to maintain essential health services to protect the most vulnerable. Innovations from our NEST-360 partnership are being repurposed to help manage the pandemic. Debra Jackson was appointed as our first 'Takeda Chair in Global Child Health'.

@MARCH_LSHTM

LSHTM is home to a large number of active research groupings and networks, working to address major public and global health challenges. These include the Centre For Health Economics in London, the Gender Violence and Health Centre, the International Centre for Evidence in Disability, and the International Centre for Eye Health. Find out more about these and many others at lshtm.ac.uk/research

Launching in 2021, the **Centre for Epidemic Preparedness and Response (CEPR)** will gather and synergise global expertise to focus on the prevention of, and response to, outbreaks and epidemics. The Centre will explore key areas of investigation, provide innovative training, and offer insight into all aspects of outbreak response to students, healthcare professionals, organisations and policy makers. Through its research activities and action on the ground, the CEPR will significantly reduce the human and economic cost of epidemics.

Partnerships

Working in partnership is central to achieving our mission. Our partnerships in the UK and across high-, middle- and low-income countries deliver health and socioeconomic benefits across the world, especially in the most disadvantaged communities.



We ran a second call of our African partnership grants scheme, funded through our Wellcome Institutional Strategic Support Fund. Three proposals were awarded funding to support collaborative activity with our MRC Units and partners in Africa.



Following the appointment of a new Director at the Africa Health Research Institute, South Africa, we formalised our long-standing relationship through the creation of a new partnership liaison committee.



We continued to work with Ethiopian partners on projects with embedded capacity development activities, including coaching Ministry of Health analysts, training PhD students at several Ethiopian universities and establishing advanced laboratory support.



We expanded our work in adolescent health with the Mwanza Intervention Trials Unit with the launch of a new three-year study on menstrual health among secondary school girls in Tanzania.



LSHTM's Professor Rashida Ferrand played a key role in the COVID-19 response in Zimbabwe, working with partners and colleagues to establish a special COVID-19 unit at the main hospital in Harare and crowd-sourcing funding to maintain clinical services. Meanwhile, in Zambia, LSHTM staff helped to develop the Zambian National Health Research Authority's "COVID-19 Research and Innovation Plan for Zambia".



We continued to support the strengthening of connections between the MRC Unit The Gambia and regional partners, hosting visits to London from the Nigerian Institute for Medical Research and the Centre National de Recherche et de Formation sur le Paludisme, Burkina Faso.



The China Medical Board awarded a grant of US\$950,000 to LSHTM to run a Global Health Leadership Development Programme for Chinese health professionals. Scholars will undertake training at both LSHTM and a partner institution in a low or middle income country and thus foster new multilateral institutional relationships.



Our partnership with Hong Kong University (HKU) was strengthened with the launch of a major new project to create a "Laboratory of Data Discovery for Health (D24H)" in Hong Kong. The project is led by HKU and LSHTM researchers are Co-PIs on two of its five programmes. Meanwhile, in London, seven HKU undergraduate medical students completed a year of intercalated Master's study with us.



In order to further develop our presence in India, we started exploring the creation of an LSHTM South Asia Centre in Hyderabad, with the support of the Government of Telangana State. Our relationship with the Government of Telangana was consolidated through the signing of a Memorandum of Understanding at the BioAsia 2020 conference in Hyderabad.



We made a new parallel appointment with the National University of Singapore, with the aim of strengthening collaboration in the area of comparative health systems.



We recruited five more students to our Joint PhD programme for Global Health with Nagasaki University, bringing the total number of students registered to 15.



LSHTM and Charité Global Health launched a joint Global Health Lecture Series bringing together leading scientists from the UK, Germany and further afield to present cutting-edge research on pressing global health issues and to discuss the implications of their work for policy and practice.



LSHTM joined the European Global Health Research Institutes Network (EGHRIN), new network of leading research institutions in Europe with a shared aim of promoting and advocating for global health research and innovation.



We started to explore a new partnership with the Institute of Tropical Medicine, Antwerp, and organised an online event showcasing ITM's expertise in biomedical sciences, clinical sciences and public health.



We became one of the first academic partners of the International Digital Health & AI Research Collaborative (I-DAIR), a new global platform aiming to enable inclusive, impactful, and responsible research into digital health and artificial intelligence for health.

Education



Our students in 2019 on the steps of Keppel Street, London.

A transformative year for education at LSHTM began in early 2020 as COVID-19 took hold around the world. With many LSHTM experts involved in the global response to COVID-19, we were guided by the best scientific advice on how the outbreak would likely unfold and therefore impact our teaching, allowing us to make early decisions that ensured our students continued their education programmes **safely and at the highest quality**.

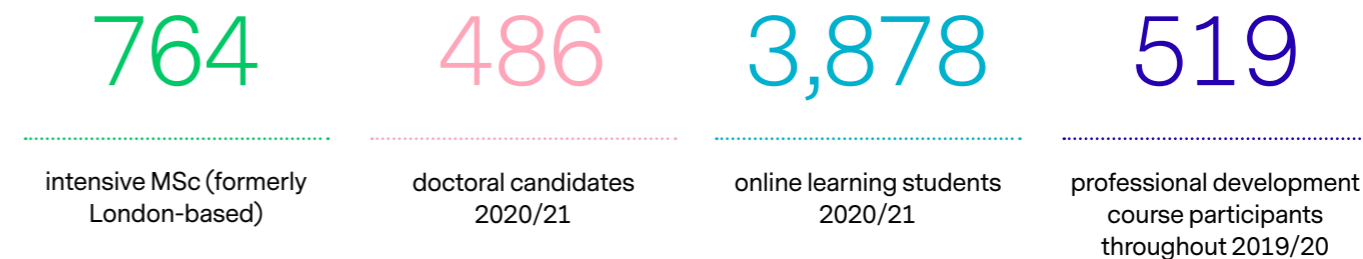
Staff worked tirelessly to move our face-to-face teaching and student support to digital delivery, and for the final term of 2019/20, all teaching and exams at our London campus moved online. Our **Doctoral College** held their first virtual Research Degree Poster Day and moved vivas online.

With ongoing expert scientific advice indicating the effects of the pandemic would continue well into 2021, in June 2020 we were among the first UK universities to announce we would be delivering **teaching digitally** for the start of the new academic year. This move was supported with investment in an education change programme including module digitisation and Digital Learning Champions. The success of this work has strengthened the future of our digital education delivery beyond 2021 and accelerated our plans to offer programmes with a greater blend of campus and online learning.

COVID-19 not only affected how we taught, but also what we taught. Experts from the UK Public Health Rapid Support Team developed a

new free online course '**COVID-19: Tackling the Novel Coronavirus**', providing an understanding of the emergence of COVID-19 and how we respond to it going forward. It became the second largest ever course launched on FutureLearn with more than 200,000 users when it first ran in March-April 2020. We plan to launch credit bearing courses on the FutureLearn platform in 2021, including one on pandemic responsiveness.

LSHTM has always proudly trained future health leaders, managers and researchers who share our mission to improve health worldwide, and this was nowhere more evident than among the hundreds of students who volunteered to help with LSHTM's COVID-19 research response



Students by region

Region	Doctoral	MSc (intensive)	Online learning
Africa	83	76	490
Central and Eastern Asia, Middle East	25	45	300
UK	192	351	877
Europe (non-UK)	83	129	866
North and Central America (inc. Caribbean)	78	112	850
South America	4	7	65
South Asia	11	25	121
South East Asia & Oceania	10	18	309

*Region data for 1 MSc student unknown

alongside their studies. More than 1,000 members of our student and alumni community volunteered to support **rapid data collection** in response to outbreak. One project produces a World Health Organization database of global interventions in response to the pandemic, allowing international comparisons and informing response efforts.

2020 will not only be remembered for COVID-19, but also for the global Black Lives Matter movement, which placed racism in the spotlight. In response, we have placed special emphasis on **decolonising our curriculum** and developing an inclusive education framework for those involved in teaching, a review of teaching materials, development

of an anti-racist education framework, and recruitment of a new role within our Centre for Excellence in Learning and Teaching to oversee this work and ensure we measure progress and impact in achieving racial equality.

As our new academic year began with a virtual 'Welcome Week' in September 2020, we proudly welcomed our first ever cohort to the **new MSc in Health Data Science**. Funded by Health Data Research UK, the MSc will train a new generation of scientists in quantitative, computational, and practical data management skills applicable to the public and private sector, helping to address the skills shortage in data science.

91% student satisfaction with the quality of courses
2nd in the UK for access to resources
4th in the UK for quality of teaching
Data from Postgraduate Taught Experience Survey 2020 across 69 UK higher education institutions

Staff community

The talented and committed staff at LSHTM are the heart of our organisation. The COVID-19 pandemic has presented numerous challenges and opportunities for the LSHTM community. In the UK we moved to **remote working** for most of our staff from March 2020, while staff in The Gambia and Uganda have responded with great creativity, flexibility and resilience for the Units to remain operational during these challenging times.

The wellbeing of our community continues to be at the forefront of our minds, and we have launched a number of new wellbeing support initiatives as well as virtual platforms to keep us connected. We have been

immensely grateful to colleagues who have remained on site to conduct crucial research in laboratories and keep our buildings running safely. Many staff involved directly in COVID-19 research have worked tirelessly to provide world-leading expertise to support response efforts globally, and many other staff have worked diligently and tenaciously to ensure we continue to deliver across our other areas of work and continue in our mission to **improve health worldwide through research and education**.

In June, as the global scourge that is racism was brought into sharp focus following George Floyd's senseless death, we renewed our commitment to tackling racism and other forms

of discrimination. Many discussions have taken place at different levels across LSHTM, which have kept **equality, diversity and inclusion** in our mainstream dialogue. We have created a new Council committee on Diversity & Inclusion and have committed to an independent external review of racial inequality at LSHTM. We continue to work hard to improve understanding of LSHTM's colonial history, and how it influences contemporary partnerships, education and research activities and practices. We have introduced new tools, reviews and monitoring across our operations with a view to making further progress. There is much more to do and learning to be had – this is just the beginning of a process of change.

In memory of Deepthi Wickremasinghe, Gita Ramjee and Val Curtis



Deepthi Wickremasinghe

In April, we were deeply saddened by the death of Reverend Deepthi Wickremasinghe, chaplain for LSHTM and Research Fellow with the IDEAS project, who made important scientific contributions to our understanding of sustainability for improved health.



Gita Ramjee

April also marked the death of Honorary Professor Gita Ramjee, a leading scientist in the field of HIV prevention who was an inspirational role model for young scientists and women scientists.

In October, our community mourned the loss of Professor Val Curtis, Director of the Environmental Health Group at



Val Curtis

LSHTM and lovingly known as 'The Queen of Hygiene'. Over an incredible career of more than 30 years, Val led research that put hygiene behaviour change including handwashing on the political agenda across the world, and advocated that decent toilets be made normal for everyone, everywhere.

Notable awards and honours

- January – Professor **Tumani Corrah** awarded an Honorary KBE by Her Majesty The Queen in recognition of his services to medical research in sub-Saharan Africa.
- May – Professors **Pontiano Kaleebu** and **Helen Weiss** elected as Fellows of the Academy of Medical Sciences.
- August – Dr **Kate Gallagher** received Sabin's Rising Star Award for work expanding access to immunisation through thoughtful research and advocacy.
- October – Professor **Graham Medley** awarded an OBE by Her Majesty The Queen for services to infectious disease control, particularly the COVID-19 response in the UK, and Professor Emma Thomson was awarded an OBE

- for services to the NHS during the COVID-19 response. Professor **Martin Antonio** elected as a Fellow to the African Academy of Sciences. Professor **Daniel Bausch** voted President-Elect of the American Society of Tropical Medicine & Hygiene.
- November – Professor **Val Curtis** posthumously awarded WaterAid's President's Award, signed by its President, HRH The Prince of Wales. Professor **Pontiano Kaleebu** awarded a recognition of excellence from the Ugandan Ministry of Science, Technology and Innovation for leadership and dedication to the technical fight against COVID-19 and other viruses in Uganda.

Congratulations to our new Professorial appointments in 2020

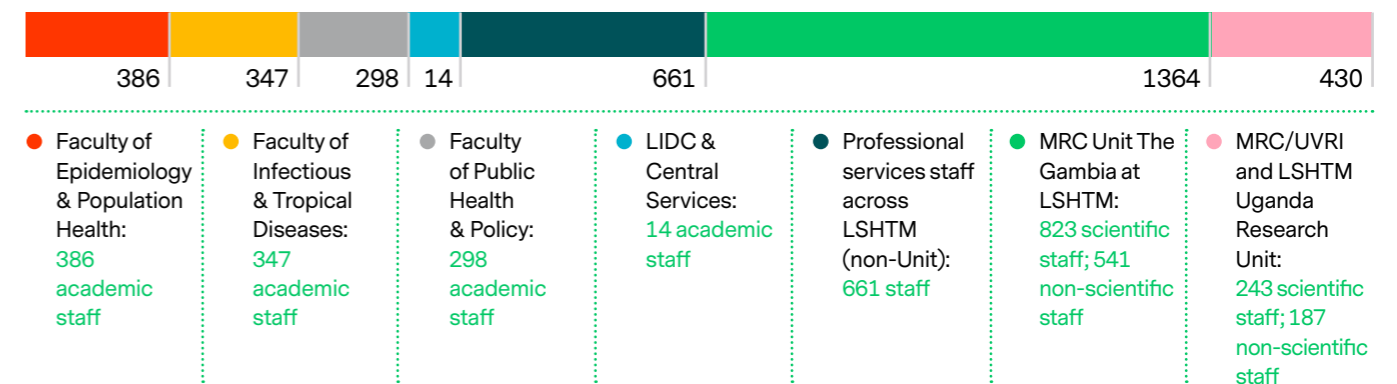
- ◇ Anil Koul, Professor of Translational Discovery
- ◇ Roger Hewson, Professor in Molecular Virology
- ◇ Debra Jackson, Takeda Chair in Global Child Health
- ◇ Emma Thomson, Clinical Professor in Emerging Viruses
- ◇ Carole Presern, Professor of the Practice of Global Health
- Dina Balabanova, Professor of Health Systems and Policy
- Heidi Stöckl, Professor of Social Epidemiology
- Fern Terris-Prestholt, Professor of Health Economics
- Cecile Knai, Professor of Public Health Policy
- Matthew Egan, Professor of Public Health
- Stefan Flasche, Professor of Vaccine Epidemiology
- Sebastian Funk, Professor of Infectious Disease Dynamics
- Elizabeth Williamson, Professor of Biostatistics and Health Data Science
- Shelley Lees, Professor of Anthropology in Public Health
- Virginia Bond, Professor of Anthropology of Public Health
- Susana Campino, Professor of Genomics and Infectious Diseases
- Katharina Kranzer, Clinical Professor of Infectious Disease Epidemiology

• Internal appointment ◇ External appointment

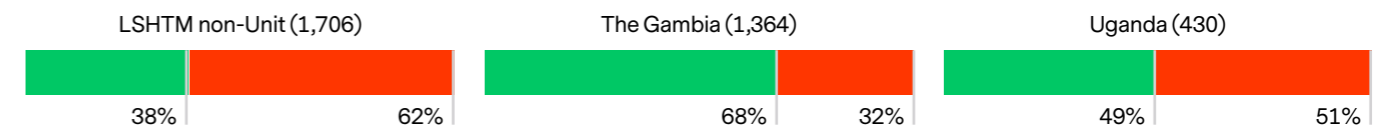
2020 LSHTM Director's Award winners

- Outstanding innovation in education** - Dr Lioba Hirsch, Research Fellow, and Claire Rogers, Head of Teaching and Diagnostic Unit (joint winners)
- Outstanding contribution to LSHTM Research** - Matthew Burton, Professor of International Eye Health, and Richard White, Professor of Infectious Disease Modelling (joint winners)
- Outstanding professional services team** - COVID-19 clinical response team for the MRC Unit in the Gambia
- Outstanding research team** - Centre for Mathematical Modelling of Infectious Diseases COVID-19 working group
- Excellence in developing students as researchers** - Alison Elliott, Professor of Tropical Medicine
- Excellence for learning, teaching, assessment or the wider student experience** - Dr Dalya Marks, Assistant Professor in Public Health, and the LSHTM MOOC team for 'COVID-19: Tackling the Novel Coronavirus' (joint winners)
- Outstanding contribution to LSHTM professional services** - Steve Sutterby, Assistant Research Finance Manager
- Public engagement** - Dr Fiona Cresswell for public engagement activities on HIV in Uganda
- Early career research** - Dr Sam Abbott
- Outstanding contribution to society** - Rashida Ferrand, Professor of International Health

Staff by area of LSHTM (data as of 31 July 2020):



Staff by gender: ● Male ● Female



Total number of staff **3,500**

We have staff from **80** countries

LSHTM on the global stage

Our experts have been providing independent and authoritative advice to policymakers around the world to inform the response to COVID-19. LSHTM has 17 members on the UK Government's **Scientific Advisory Group for Emergencies (SAGE)** expert advisory groups as well as three experts on the new World Health Organization SAGE Working Group on COVID-19 vaccines.

Prof Peter Piot was appointed to the post of **Special Advisor to the President of the European Commission**, Ursula van der Leyen, on research and innovation for COVID-19. Prof Piot testified to the UK House of Lords Science & Technology Select Committee inquiry into the 'Science of COVID-19' and numerous other LSHTM experts also submitted evidence and spoke at other parliamentary inquiries on COVID-19.

HRH The Duchess of Cornwall met the medical detection dogs being trained to sniff out COVID-19 as part of a project led by LSHTM. During the visit

The Duchess watched a demonstration of passive screening by the dogs, which – should the trial be successful – could be carried out at points of entry and public places.

LSHTM's **COVID-19 vaccine candidate tracker** was hugely popular with policymakers, researchers and the public. It provides a database of vaccine candidates, clinical trial timelines and published trial reports.

The Vaccine Confidence Project established Team Halo, a campaign on Tik Tok and Instagram where scientists working on COVID-19 vaccines made short videos explaining their part in the vaccine effort. The **#TeamHalo** project is a collaboration with UN Verified Initiative and Gavi, the Vaccine Alliance, providing education on vaccines and putting the spotlight on the experts working around the clock to help end the pandemic.

The Vaccine Confidence Project was also the recipient of a **Facebook research award** for combatting

misinformation and polarization. With the COVID-19 pandemic not being just a health problem but also fueling an infodemic on an unprecedented scale, the team was awarded for their project on the contagion of misinformation.

Professor Heidi Larson, Director of the Vaccine Confidence Project, spoke at the New York Times annual summit alongside Bill Gates and Pfizer's Albert Bourla. The panel discussed the latest breakthroughs in the development of COVID-19 vaccines and the challenges of distributing it, both in terms of logistics and winning public trust. Prof Larson also spoke at the **World Economic Forum** in Davos about how vaccine hesitancy is driving a resurgence of preventable disease.

A new report by LSHTM researchers and parliamentarians from the UK's influential **All-Party Parliamentary Group on Global Health** argued the UK can play an even greater role in health globally. The report noted that further planning, collaboration and targeted investment would enable the UK to

become a truly global centre for health and health science.

LSHTM joined organisations across the UK calling for a **'Decade of Health'** as part of a campaign led by the Bill & Melinda Gates Foundations to demonstrate the importance of science, innovation and collaboration. The mass media campaign highlighted people and projects working to make the world healthier and safer, showing what could be achieved to improve health for all with renewed support for global health in the next 10 years. The campaign profiled the work of LSHTM experts in leading the way for science and innovation for handwashing and

environmental hygiene, antimicrobial resistance, pandemic preparedness and response, eye health, vaccines, and climate change and planetary health.


A **Planetary Health conference** was held in The Gambia, uniting scientists and policy makers to develop and deliver critical actions to safeguard health from environmental change. The first-of-its-kind event in the climate change hotspot of West Africa also provided mentorship and training for young scientists whose work on planetary health will be crucial for the future.

A new resolution on **'Defeating Meningitis by 2030'** was approved at the World Health Assembly. Meningitis remains a global public health challenge, with an estimated five million new cases and 290,000 deaths annually. Professors Sir Brian Greenwood, Joy Lawn and Beate Kampmann were part of the taskforce behind the resolution.

The **2020 Global AIDS Update** report from the United Nations set new targets for ending AIDS. It highlighted the work of LSHTM's PopART trial which used a 'universal test and treat' strategy combined with prevention to reduce HIV infections.



Richard Hatchett (CEPI), Prof Heidi Larson and Lars Rebien Sorensen (Novo Nordisk Foundation) speaking at the World Economic Forum in January 2020. Credit: World Economic Forum/Walter Duerst



133,763 news stories about LSHTM in newspapers, TV, radio and online around the world in 2020 (471% increase on 2019)

No.1 most influential Twitter account for UK and Ireland Universities (May 2020, Edurank)

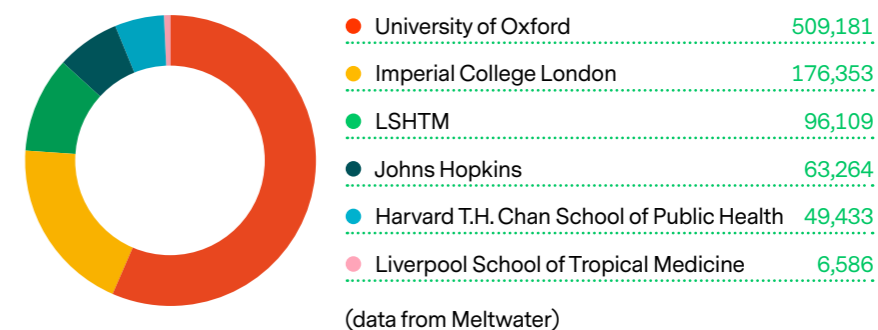
190,000+ followers on @LSHTM Facebook, Twitter, Instagram and LinkedIn

13th most popular science podcast in the UK on Spotify for LSHTM Viral, with episodes listened to in 170+ countries around the world

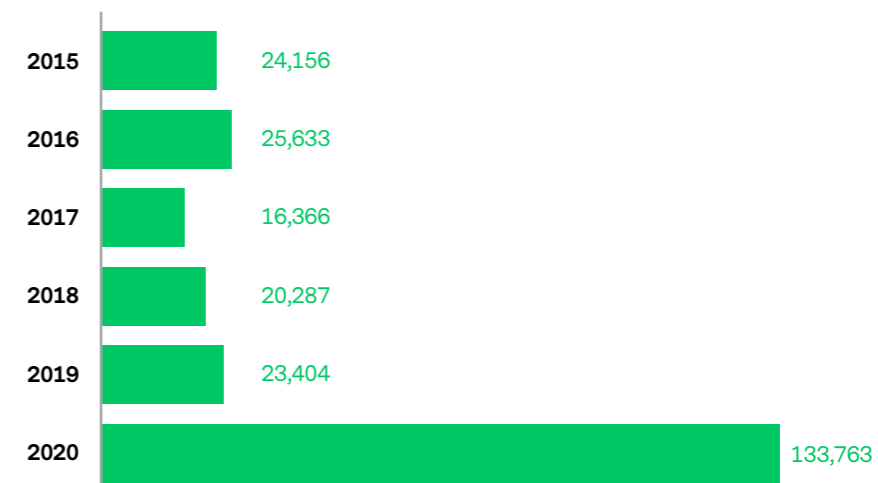
100,000+ views of our live COVID-19 Q&As streamed on Twitter and YouTube, and for which we won the Health and Wellness Campaign award at the 2020 Women in Marketing Awards

32,000 alumni working to improve health around the world

Online media coverage about COVID-19 in 2020



LSHTM total annual media coverage (print, broadcast and online)



Innovation

Innovation across all our activities remains vital to address infectious and chronic conditions. Working across sectors and regions we have progressed work on **malaria, tuberculosis and vaccine development** through strengthening our local partnerships in the Bloomsbury SET programme (Research England Connecting Capability Fund) and with our national partners in the Tropical Infectious Disease Consortium (MRC Confidence in Concept Award).

The dedicated **Vaccines Manufacturing Innovation Centre (VMIC)**, in which we are a partner, was enhanced through an additional £131m from the UK Government to fast-track construction and create a virtual manufacturing centre until construction is complete. UK Prime Minister Boris Johnson visited the rapidly developing VMIC construction site in September 2020.

Our **Wellcome Institutional Translation Partnership Award** provided dedicated seed funding to progress work on diagnostics, drug discovery and vaccine development along the translational pipeline.

Our new innovation training programme has equipped our researchers with knowledge on creating impact, intellectual property and progressing along the bench to bedside pipeline, while our virtual **Dragon's Den Style Innovation Funding Competition** gave budding innovators the opportunity to pitch for up to £5,000 to take their transformational ideas closer to impact.

Our spinouts have continued to transform our ideas and specialist knowledge into innovative products and services. **ArkVax**, which pioneers an innovative bacterial glycoengineering platform, successfully competed for 5 months support from the Accelerate@ Babraham Start-up Programme.



Professor James Logan (Director of ARCTEC) with Matt Hancock (Secretary of State for Health and Social Care), Dr Claire Guest (Medical Detection Dogs) and Asher (COVID-19 detection trial dog).

ARCTEC has driven innovation and social impact in vector control and public health. This includes developing engaging and educational programmes tailored to different population groups, such as using mobile communication to educate families in Mali on how to keep their homes safe from vector borne diseases and COVID-19, and building COVID-19 understanding in children by creating age-tailored communication materials. ARCTEC launched the Global Vector Hub (Beta), to support health workers and researchers working on vector control programmes during the pandemic.

The ARCTEC team are also leading game-changing research, funded by the Department of Health & Social Care, investigating whether dogs can be trained to detect COVID-19. If successful, the specially-trained dogs could be used as a new rapid, non-invasive testing measure for COVID-19.

Peek's community eye health programmes in Pakistan and Zimbabwe are scaling up, with programmes in two regions of Pakistan collectively seeing close to 1,000 patients per day. Peek has also developed a smartphone-based algorithm for community volunteers based on the WHO AFRO PEC algorithm. Following successful piloting in Kenya, this algorithm has been incorporated into Peek's platform to support identification at the doorstep, referral to and triage with basic treatment at primary health units with onward referral to the district eye hospital. In partnership with LSHTM's International Centre for Eye Health, the Peek team developed remote programme design, training and support capabilities to enhance evidence-based decision making in health care service delivery across their growing network of eye care programmes.

As we enter 2021, we will continue to explore, enable and embed innovation across our activities to meet the ongoing and new challenges in global health.

Financial summary 2019/20



Total annual income 2019/20:

UK Research and Innovation	£41.4m
Research England / Office for Students Core Research & Teaching	£29.3m
UK government health and international development	£22.5m
Tuition fees	£21.8m
Bill & Melinda Gates Foundation	£19.7m
European Union research	£13.5m
Other income	£15.9m
Wellcome Trust	£12.4m
Donations	£9.9m
Other funded research	£52.8m

Combined competitive research income for 2019/20 £168.4m. The total value of new research grants awarded to LSHTM 2019/20 was £181.2m (page 4), which is then phased over a number of years according to the grant duration.

Total annual operating income 2019/20:



Total annual operating expenditure 2019/20:



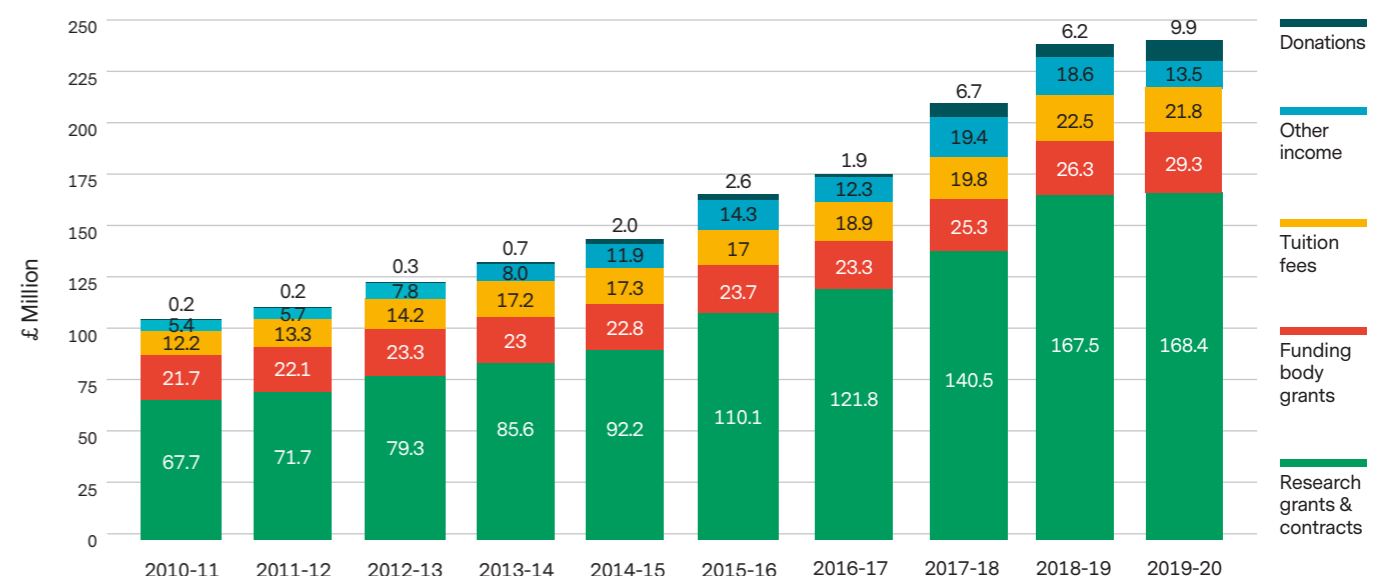
Total research income 2019/20 for MRC Unit The Gambia at LSHTM £20.5m

UK Research & Innovation	£13.5m
Charities	£3.5m
Other funded research	£2.4m
European Union research	£0.8m
UK government health and international development	£0.3m

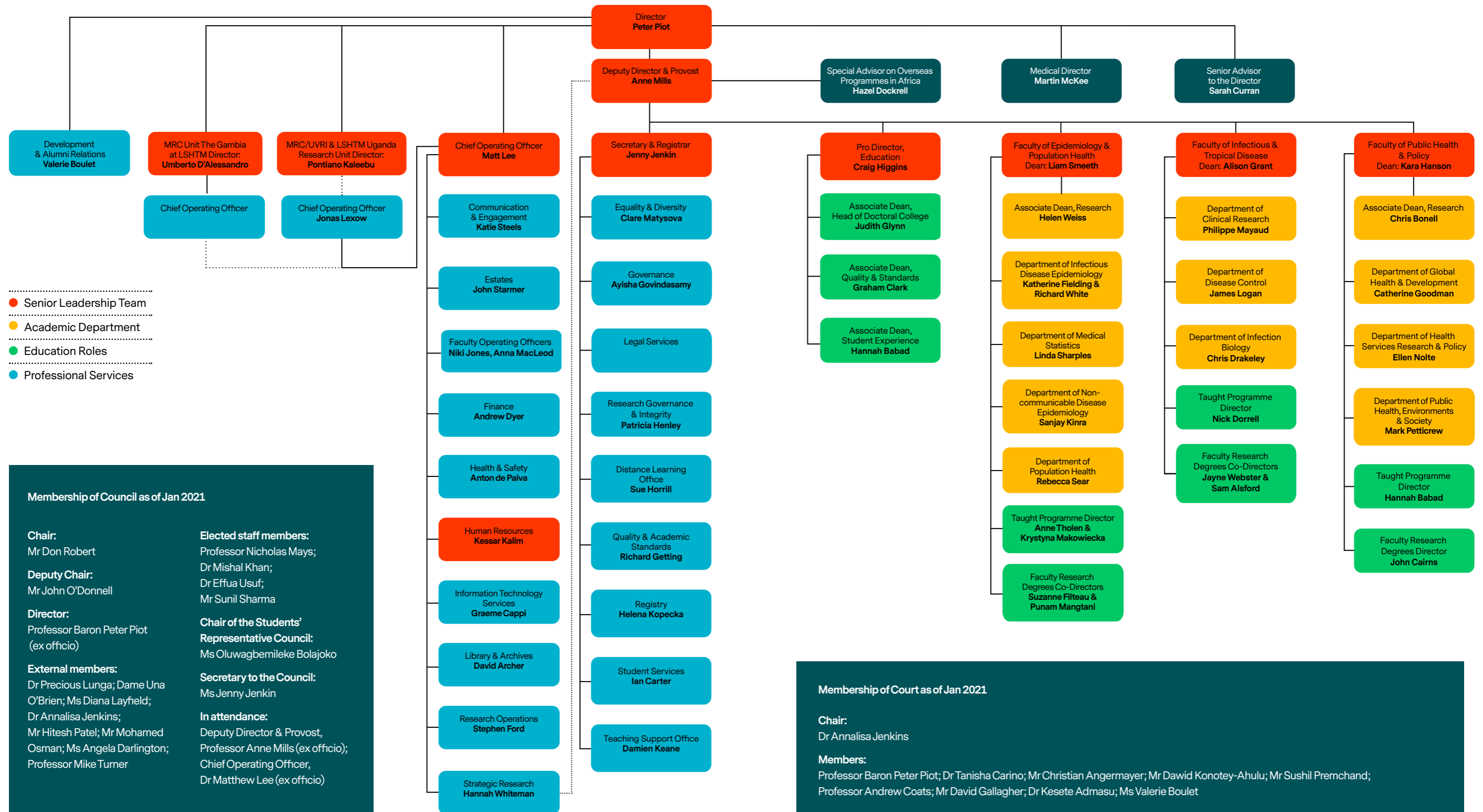
Total research income 2019/20 MRC/UVRI & LSHTM Uganda Research Unit £10.5m

UK Research & Innovation	£5.2m
Charities	£1.6m
Other funded research	£1.6m
European Union research	£1.2m
UK government health and international development	£0.9m

Income growth



Organisational chart as of January 2020



- Senior Leadership Team
- Academic Department
- Education Roles
- Professional Services

Membership of Council as of Jan 2021

Chair:
Mr Don Robert

Deputy Chair:
Mr John O'Donnell

Director:
Professor Baron Peter Piot (ex officio)

External members:
Dr Precious Lunga; Dame Una O'Brien; Ms Diana Layfield; Dr Annalisa Jenkins; Mr Hitesh Patel; Mr Mohamed Osman; Ms Angela Darlington; Professor Mike Turner

Elected staff members:
Professor Nicholas Mays; Dr Mishal Khan; Dr Effua Usuf; Mr Sunil Sharma

Chair of the Students' Representative Council:
Ms Oluwagbemileke Bolajoko

Secretary to the Council:
Ms Jenny Jenkin

In attendance:
Deputy Director & Provost, Professor Anne Mills (ex officio); Chief Operating Officer, Dr Matthew Lee (ex officio)

Membership of Court as of Jan 2021

Chair:
Dr Annalisa Jenkins

Members:
Professor Baron Peter Piot; Dr Tanisha Carino; Mr Christian Angermayer; Mr Dawid Konotey-Ahulu; Mr Sushil Premchand; Professor Andrew Coats; Mr David Gallagher; Dr Kesete Admasu; Ms Valerie Boulet

Progress powered by philanthropy

Known for its world-leading research, postgraduate studies and continuing education in public and global health, LSHTM continually strives to deliver research and teaching of the highest quality. Philanthropy is vitally important to our mission and our ability to effect lasting, positive change. The generosity of our donors is helping us to enrich the lives of people and communities across the globe. From scholarships and teaching to world-class facilities and coronavirus-related work, donor support is having a real impact across our School.

Last year more than 940 individuals, companies and charitable trusts donated to LSHTM — more than in any previous year. 500 of these donors gave for the first time, highlighting the crucial role played by our School in a challenging year. Our growing community of donors enabled us to focus efforts in developing LSHTM in three primary areas:

- Investing in staff to build on our research strengths and support novel and emerging thinking in health.
- Providing opportunities for the very best students to study at LSHTM and gain the skills to become future leaders in global health.
- Creating outstanding facilities that support our growth for years to come.

Philanthropy enables LSHTM to do more, faster, and is vital in helping us deploy research in real time in response to crises, develop innovative programmes for major health threats and train future generations of public and global health leaders and researchers. The highlights below demonstrate how visionary and inspirational support can bring transformational change, both within and beyond LSHTM. Thank you for supporting us in our mission to improve health, worldwide.



Responding to COVID-19

LSHTM has made an extraordinary contribution to tackling COVID-19. In response to the outbreak, the School rapidly mobilised to launch a Response Fund, increasing our ability to respond to the pandemic. The campaign had an overwhelming response from alumni, the public, companies and charitable trusts. Through the year, this support has enabled our academics to continue their work advising the public and policy makers, fight misinformation and map the spread of the disease. The impact of the pandemic has been far-reaching and will be felt for some time. We continue to work tirelessly to lessen the impact of the virus and ensure that we are prepared for future crises.



A global approach to sanitation

Backed by a multi-year £25 million commitment from Reckitt Benckiser, LSHTM will be a leading partner in the Reckitt Global Hygiene Institute (RGHI), a global, independent, public health research and innovation hub. RGHI will

bridge epidemiology, public health, consumer insights, and behaviour change to drive action with partners worldwide.

With leadership from inaugural Chair Peter Piot, and a global network of collaborators, the RGHI will see our School be a convening body bringing together visiting lecturers, fellows, policy makers, and influencers from around the world. The partnership will train the next generation of hygiene health experts and recruit both rising stars and established leaders working in hygiene health.



A new home for epidemiology and population health

The last year saw further donors make commitments for the construction, a major expansion to LSHTM which will provide a new home for the Faculty of Epidemiology & Population Health. The Charles Wolfson Charitable Trust donated to the project, joining major funders such as the Garfield Weston Foundation, the MBI Al Jaber Foundation and a growing number of individual supporters.

The new building on Tavistock Place will enable us to build a future with environments that enliven thinking, encourage interdisciplinary conversations and are equipped with technology that propels exploration and discovery. This initiative brings together epidemiologists and related disciplines, focusing on the study and analysis of the distribution and determinants of health and disease through clinical trials, large-scale studies and evaluation of public health interventions.

A focus of the facility will be to transform global epidemic response through delivering high-impact collaborative research, shaping national and international practices and policies to control infectious threats, and directly support outbreak response, with a special focus on low- and middle-income countries.



Intervention research for global issues

The Millby Foundation expanded its support for research and interventions on the global plight of child domestic workers. Child domestic work is estimated to affect 17.2 million children, of whom over 11 million are girls aged 5-17. With the foundation's visionary philanthropic support to address this understudied and highly at-risk group of children and adolescents and the strength of LSHTM's collaborations with regional and international partners, this work is specifically designed to influence policy and interventions that create momentum to ameliorate this globally prevalent, yet still hidden issue.

Since 2017, the Millby Foundation has also provided 're-entry' grants that support the careers of researchers at LSHTM. These have given women, who are returning to academia after career or other periods of leave, the opportunity to advance research in the areas of adolescent health, gender violence and maternal and child health, and the flexibility to manage their careers during a time of transition.

Thank you

We would like to thank all those who supported LSHTM in the last academic year (1 August 2019-31 July 2020). Members of our giving societies, along with our most generous corporate, foundation and governmental funders are listed below.

Special thanks go to individuals who have helped LSHTM on its mission to improve health worldwide. These include members of Court, the Board of the American Friends of LSHTM, as well as alumni who lead Chapters around the world.

Corporations, foundations and governments

3ie	Christoffel-Blindenmission	European Vaccine Initiative	Inter-American Development Bank
The Academy of Medical Sciences	Citrefine International Limited	Eyebag Company Ltd	International Committee of the Red Cross
Aeras	Coalition for Epidemic Preparedness Innovations	Eyehope	International Food Policy Research Institute
The Alan Turing Institute	The Colt Foundation	Fleet Street Clinic	International Glaucoma Association
The Allan & Nesta Ferguson Charitable Trust	Committee on Climate Change	Food Standards Agency	International Planned Parenthood Federation
Alzheimer's Society	Consorzio per la Ricerca Sanitaria - CORIS	Fortino Capital Partners	International Rescue Committee
American Jewish World Service	Cystic Fibrosis Trust	Foundation Veolia Environnement	Inuka Foundation
American Leprosy Missions	David & Molly Pyott Foundation	The Fred Hollows Foundation	J P Moulton Charitable Foundation
Amgen Limited	The David Family Foundation	The Freedom Fund	Janssen Research & Development
Astra International	Davidson Kempner European Partners LLP	FSRH	John D and Catherine T MacArthur Foundation
Astra Zeneca	Defense Threat Reduction Agency	GAVI Alliance	John Templeton Foundation
AusAID	Department for Business Energy and Industrial Strategy	Global fund to Fight AIDS	Johnson & Johnson
Avesis	Department for International Development	Gilead Sciences Europe Ltd	The Joyce Foundation
The Balcombe Charitable Trust	Department of Foreign Affairs and Trade	GIZ GmbH	Kidney Research UK
BASF SE	Department of Health and Social Care	GlaxoSmithKline	La Ligue Contre le Cancer
Bayer HealthCare	Diabetes UK	Global Alliance for TB Drug Development	Leverhulme Trust
The Beatrice Laing Trust	Doctors of the World UK	Global Campaign for Mental Health	Lynn's Bowel Cancer Campaign
Becton, Dickinson & Company	Doris Duke Charitable Foundation	Global Fund Through Nimr Mwanza-Tanesa	Malaria Alert Centre
Bernard Van Leer Foundation	The Dowager Countess Eleanor Peel Trust	The Global Fund to Fight Aids	Mallowstreet Limited
The Bill & Melinda Gates Foundation	The Drake Foundation	Global Health Research Initiative	The Manitou Fund
Biotechnology and Biological Sciences Research Council	Drugs for Neglected Diseases Initiative	Goldman Sachs International	MBI Al Jaber Foundation
British Academy	Economic & Social Research Council	Good Ventures	McKnight Foundation
British Council	Effective Intervention	The Gordon & Betty Moore Foundation	The MEA Ramsay Research Fund
British Council for Prevention of Blindness	Eleanor Crook Foundation	Grand Challenges Canada	Médecins Sans Frontières
British Heart Foundation	Energy Efficiency and Affordability Division	The Health Foundation	Medical Care Development International
British Infection Association	Engineering & Physical Sciences Research Council	Healthcare Solutions Limited	Medical Research Council
British Skin Foundation	Entertainment Industry Foundation	Helse Nord RHF	Medicines for Malaria Venture
Cancer Research UK	European & Developing Countries Clinical Trials Partnership	Hospital & Homes of St Giles	Merck Sharp & Dohme, Corp
The Carter Center	European Academy of Dermatology and Venerology	Humanitarian Innovation Fund/Enhancing Learning & Research for Humanitarian	Mercy Corps Europe
Celgene Corporation	European Centre For Disease Prevention And Control	Ifakara Health Institute	Microsoft Corporation
Central Statistical Organization Myanmar	European Commission	Innovative Medicines Initiative 2 Joint Undertaking	The Millby Foundation
Centre Hospitalier Universitaire de Martinique	European Research Council Executive Agency	The Innovative Vector Control Consortium	Multiple Sclerosis Society
The Charles Wolfson Charitable Trust		Institut National Du Cancer	Myalgic Encephalopathy Association
Children with Cancer UK		Intellectual Ventures / Global Good Fund	National Institute for Health Research
Childrens Investment Fund Foundation		Intensive Care National Audit & Research Centre	National Institute of Academic Anaesthesia
			National Institutes of Health Research Council

Thank you

NaturalCycles Nordic AB	Swiss National Science Foundation	Michelle Bourlet	Sultana Khanum
Naval Medical Logistics Command	Takeda Pharmaceutical Company Ltd	Joel Breman	Masato Kosaka
Neglected Tropical Diseases Support Center	Task Force for Global Health	Camilla Buchanan	Tricia Kreitman
New Zealand Ministry of Health	Tijssen Stichting	Katherine States Burke & T. Robert Burke	Alison Krentel
Norwegian Institute of Public Health	UBS Optimus Foundation	Matthew Burton	Stefan Kunz
Novartis Foundation	UK Research & Innovation	Tanisha Carino	Chor Pharn Lee
Novo Nordisk A/S	Ulverscroft Foundation	Chris Chan	Shirley Lennon
Oak Foundation	UNAIDS	James Cherry	Rachel Lowe
Office for National Statistics	Unicef	Lisa Chin	David Mabey
Open Society Foundations	UNITAIDS	Michael & Maureen Chowen	Shibani Malhotra
Open Society Policy Center	United State Department of Agriculture	Iza Ciglnecki	Jill Mannall
ORBIS	United States Institute of Peace	Randi Clendennen	Dana Mazo
Oxford Policy Management	United Way Worldwide	Francis Cox	Tony McClellan
Pancreatic Cancer Research Fund	US Department of State	Jeffery Cutter	Anne Mills
PATH	USAID	Monica Daigl	Colin Morgan
Pershing Square Foundation	Vertex Ltd	Penelope Dash	Christopher Noutsios
The Pfizer Foundation	ViiV Healthcare	Mike & Lee Davis	John O'Donnell
The Pirbright Institute	Vision for a Nation Foundation	Stephen DeCherney	Helen Oliver
Program for Appropriate Technology in Health	Water Supply and Sanitation Collaborative Council	John Delury	Jan Pensaert
Public Health England	The Wellcome Trust	David Dennis	Monika Pietrek
Queen Elizabeth Diamond Jubilee Trust	William and Flora Hewlett Foundation	Michael Dohn	Peter Piot
Reckitt Benckiser	William T Grant Foundation	Wei Dong	Penelope Rostron
Relief International	World Food Programme	Charlie Easmon	Pramada Roy
The Research Council of Norway	World Health Organization	Emmanuel Emedo	Albert Sanchez Graells
Research Executive Agency	Worldwide Support for Development	Albert Faber	Marjorie Scardino
Rockefeller Philanthropy Advisors	Yeh Ming Deh Charitable Trust	Ann Fazakerley	Eduardo Simoes
Rosetrees Trust	Zibp GmbH	Edward Fern	Liam Smeeth
The Royal Society		Ian Furbank	Paul Stoffels
The Royal Veterinary College		Sally Gale	Mary Stow
Rush Foundation		John Gawoski	James Syme
SAGE Publication Ltd	Individual supporters	Con Geboers	Marcel Tanner
Save the Children	Aziz Ansari	Clare Gilbert	Geoffrey Targett
Scottish Research Council	Vernon Ansdell	Brian & Alice Greenwood	Richard Turner
Seva Foundation	Helen Ayles	Andy Haines	Leonard Valenzuela
Sightsavers	Anthony Balinski-Jundzill	Lauren Hall & David Hearth	Sten Vermund
Sir Halley Stewart Trust	Anshu Banerjee	Jonathan Herbert	Severa von Wentzel
The Steel Charitable Trust	David Beran	Geraldine Hogan	Philip Weintraub
Stichting Benevolentia	Robert Bethel	Douglas Huber	Dan Wiklund
The Swedish Research Council	Cyril Blackmore	Nobukatsu Ishikawa	David Winter
Swiss Agency for Development and Cooperation	Irving Boudville	Jane Jackson	Gail Wolstenholme
		Sadanobu Kagamimori	Charlotte Wright
		Sunil Kapur	Andrew Young
