

Who are the male sexual partners of adolescent girls and young women?

Comparative analysis of population data in three settings prior to DREAMS roll-out

A. M. Doyle¹, S. Floyd¹, K. Baisley^{1,2}, B. Orindi^{3,4}, D. Kwaro⁵, N. Mthiyane², S. Muuo³, M. Shahmanesh^{2,6}, A. Ziraba³, I. Birdthistle⁷

Background

The **DREAMS** (Determined, Resilient, Empowered, AIDS-free, Mentored, and Safe lives) Partnership by PEPFAR and private sector partners

- Aims to reduce HIV risk among adolescent girls & young women (AGYW)
- By delivering a core package of evidence-based interventions
- Some interventions are targeted at the male sexual partners of AGYW

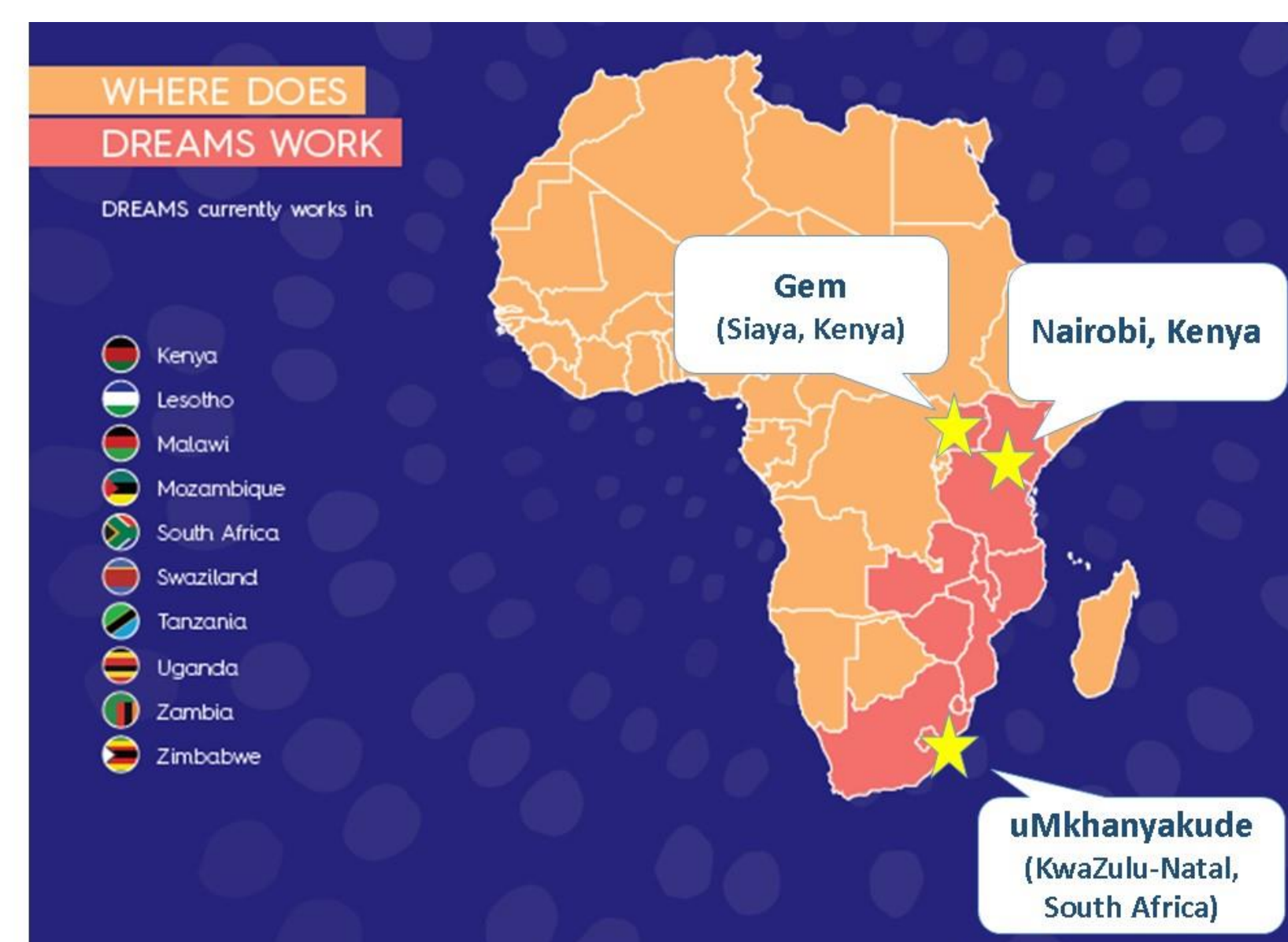
Aim

To characterise male partners of AGYW for effective targeting of interventions and to track changes in partnerships over time in DREAMS settings

Methods

Population-based data from demographic surveillance sites which overlap with DREAMS sites:

- Gem, Siaya County, rural Kenya (2014/15)
- Nairobi, urban slums Kenya (2010)
- uMkhanyakude, KwaZulu-Natal, rural South Africa (2015)



Describe

- Demographics and sexual behaviours of male partners reported by AGYW
- Characteristics of males who report sexual activity with AGYW

¹ MRC Tropical Epidemiology Group, Department of Infectious Diseases, London School of Hygiene & Tropical Medicine, London, UK

² African Health Research Institute, KwaZulu-Natal, South Africa

³ African Population and Health Research Center, Nairobi, Kenya

⁴ Kenya Medical Research Institute, Gem, Siaya county, Kenya

⁵ Katholieke Universiteit Leuven, Leuven, Belgium

⁶ University College London, London, UK

⁷ Department of Population Health, London School of Hygiene & Tropical Medicine, London, UK

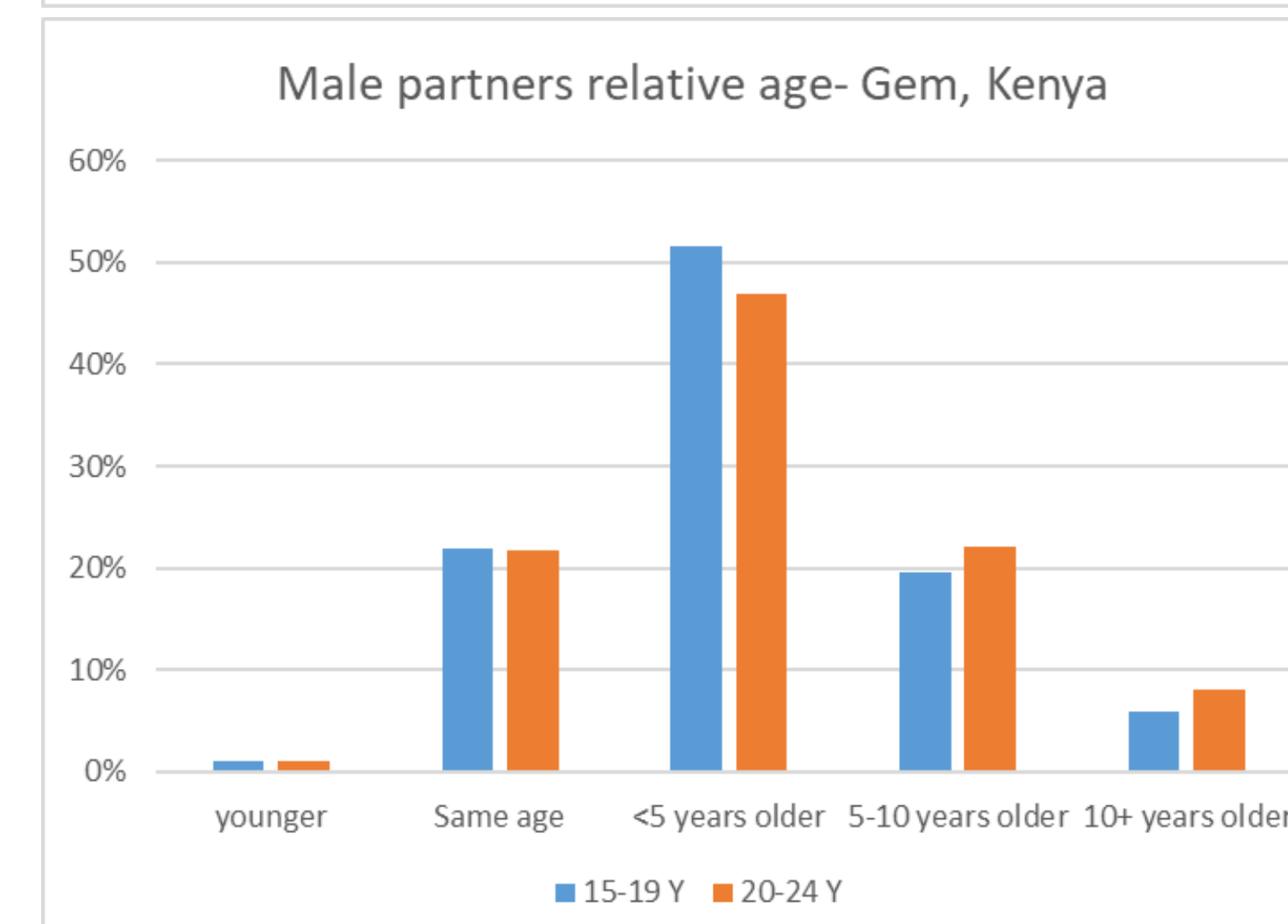
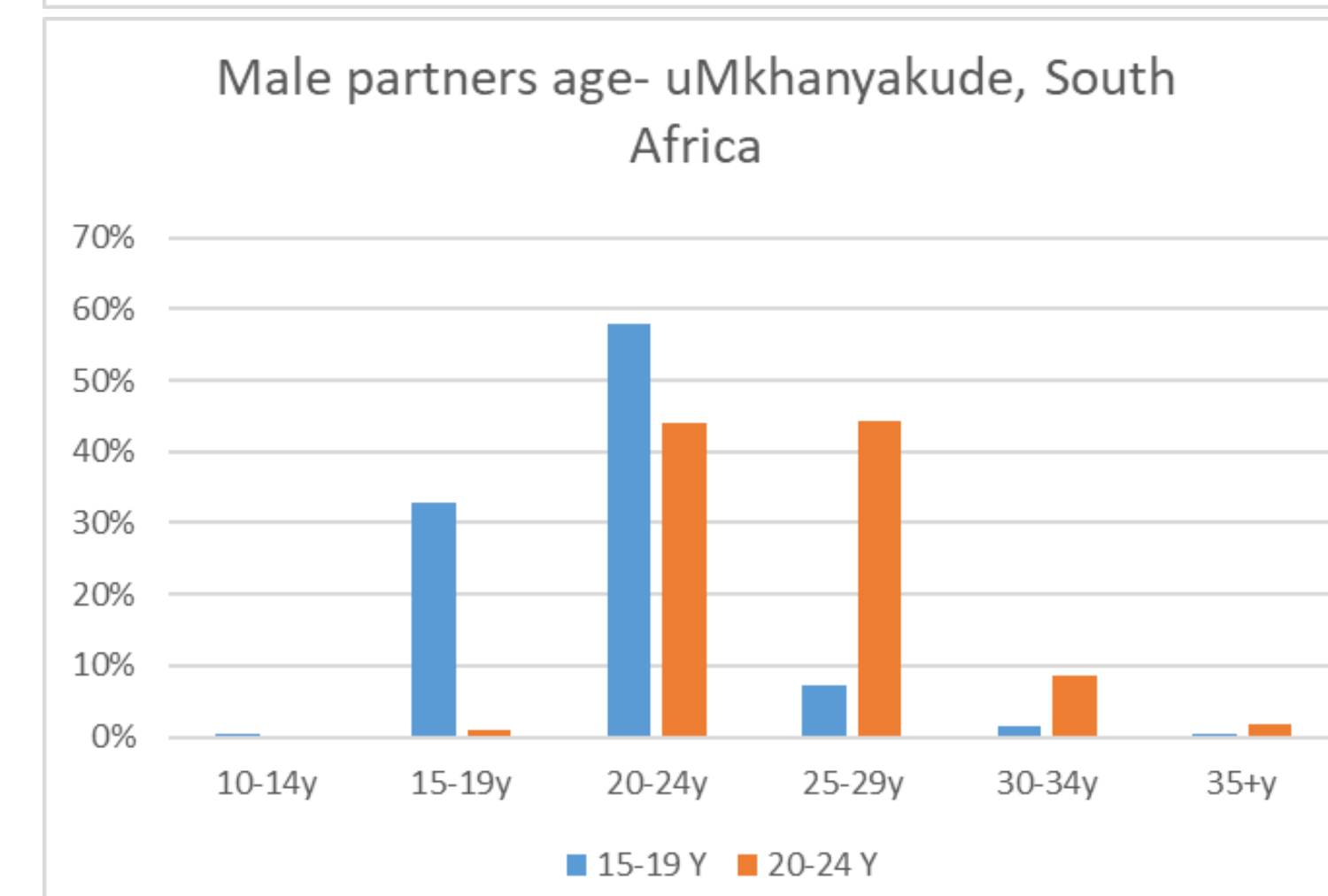
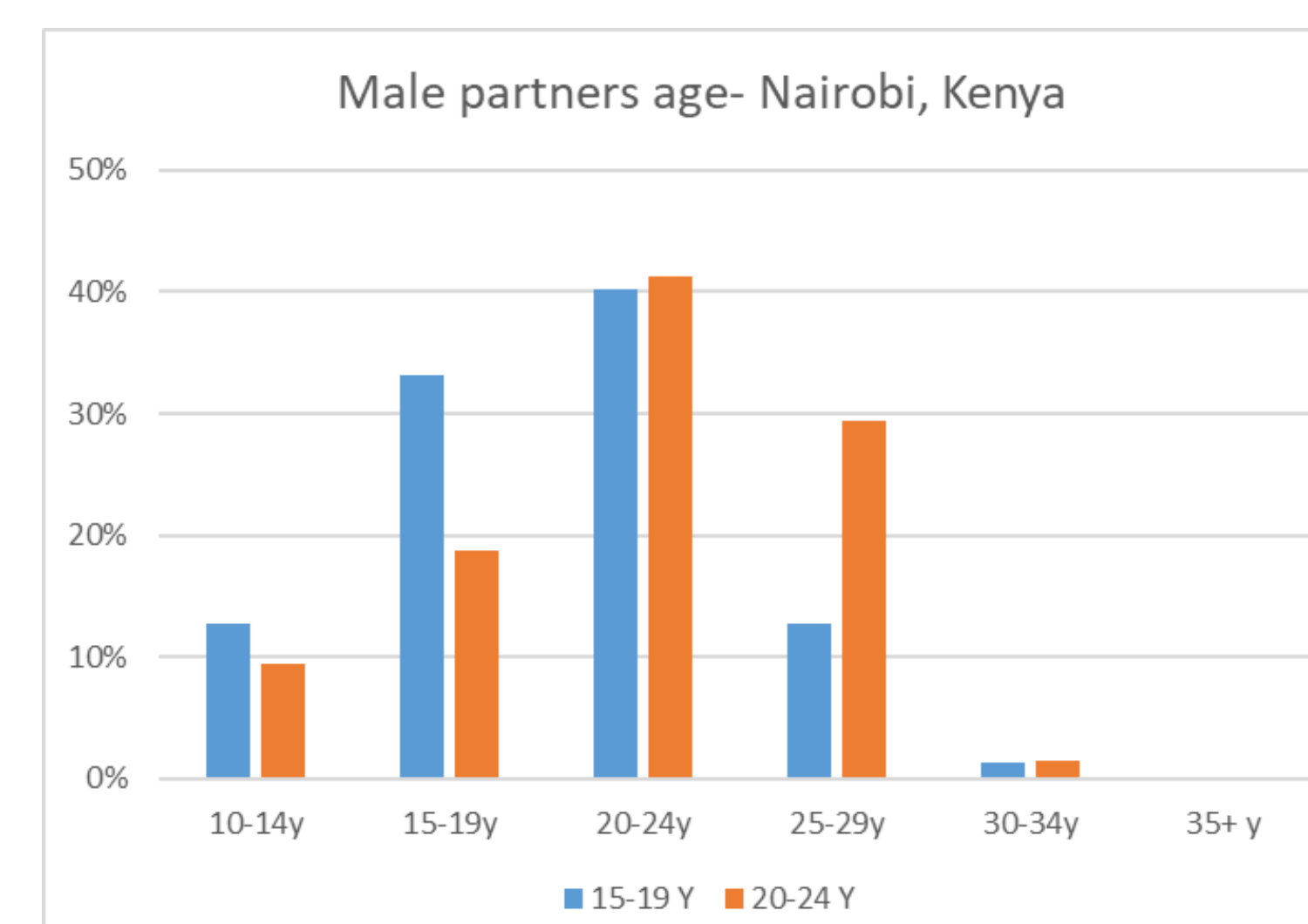
Results

- In all settings, over 90% of recent male partners reported by AGYW were aged <35 years (Figure 1) and the median age of partners was 20-29 years (Table 1)

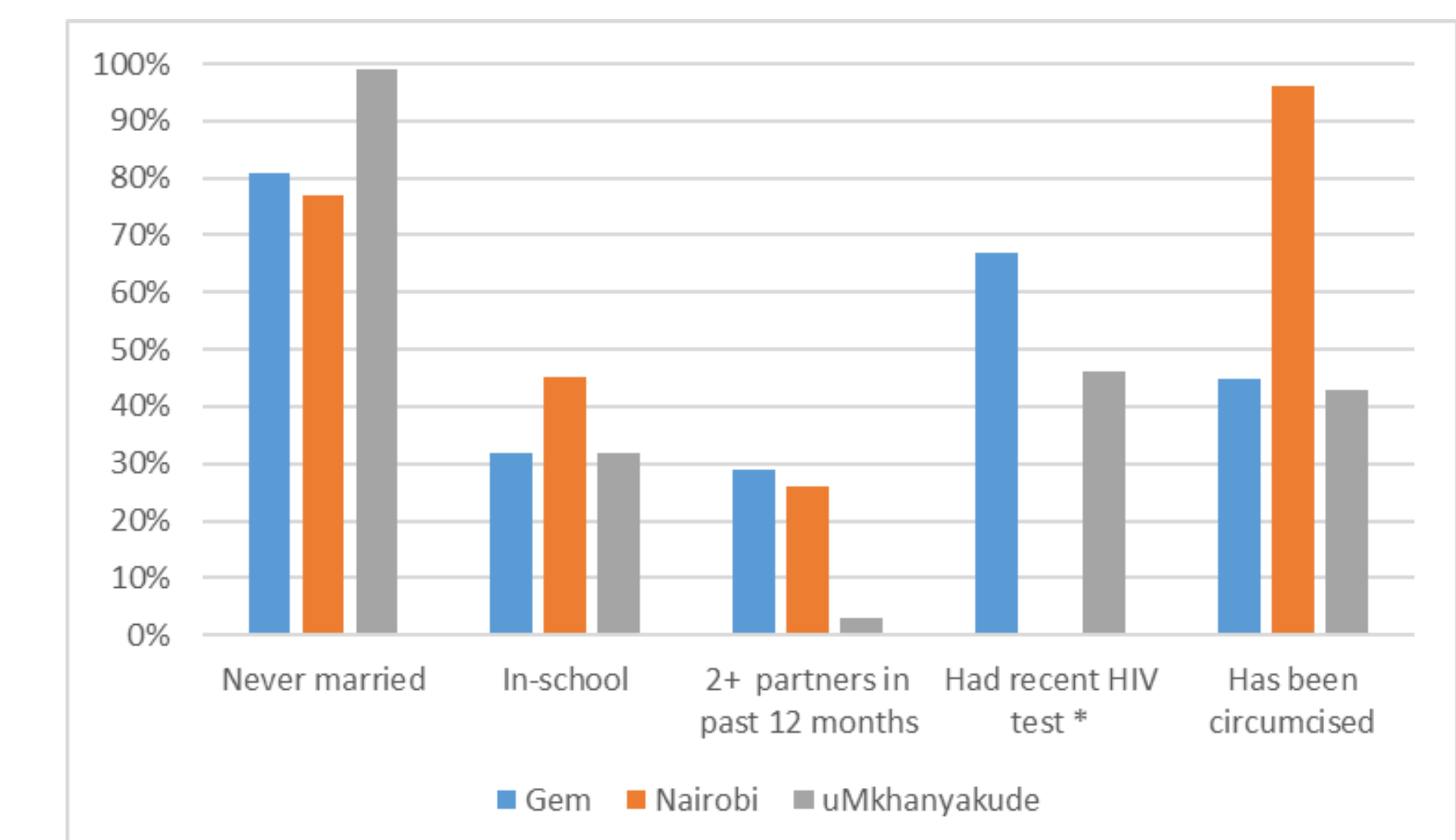
Table 1: Median age of male spousal and non-spousal partners as reported by 15-24 year old females

	Nairobi (urban Kenya)	uMkhanyakude (rural South Africa)
Spousal	21 y	29 y
Non-spousal	20 y	23 y

Figure 1: Age of male partners as reported by 15-19 yr and 20-24 yr old females in Gem, Nairobi and uMkhanyakude



- Most males who reported an AGYW partner had never been married and many were in school (**Figure 2**).
- Most males reported only one AGYW partner in the past year.
- Two thirds of male partners in Gem reported testing for HIV in the past 6 months and under half in uMkhanyakude reported testing for HIV in the past year.
- Almost all partners in Nairobi were circumcised compared to 45% in uMkhanyakude.
- **Figure 2: Characteristics of males who report an AGYW partner in the past 12 months**



Conclusions

- With almost all male sexual partners aged 15-30 years, this is an appropriate target group for DREAMS interventions
- Enabling men in this age group to adopt safer sexual behaviours, and uptake prevention and treatment services is crucial to reduce HIV among both AGYW and young men.
- Interventions in schools and workplaces may be an efficient way to target young male partners.

Reference: Who are the male sexual partners of adolescent girls and young women? Comparative analysis of population data in three settings prior to DREAMS roll-out. Doyle AM, Floyd S, Baisley K, Orindi B, Kwaro D, Mthiyane TN, Muuo S, Shahmanesh M, Ziraba A, Birdthistle I. PLoS ONE (forthcoming).

