

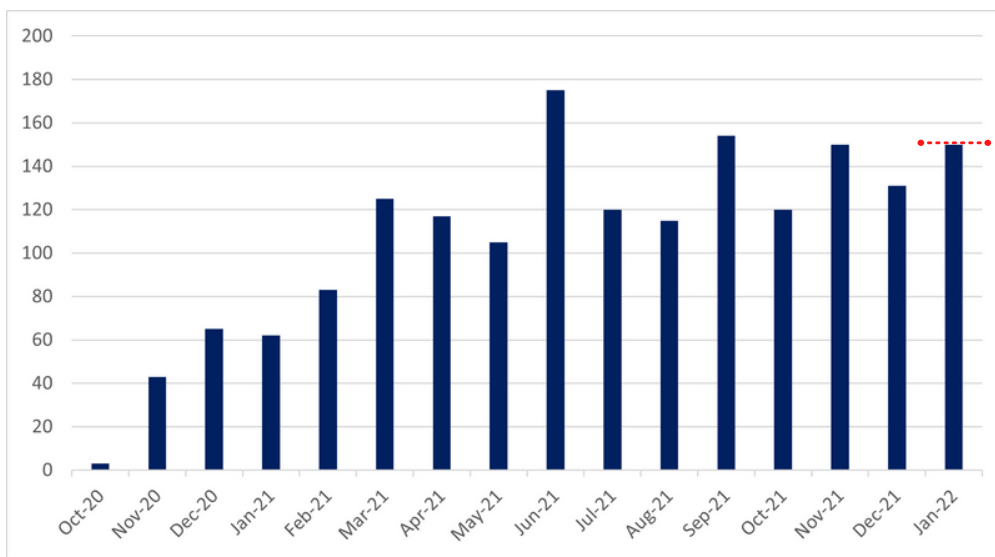
BHF PROTECT-TAVI



MESSAGE OF THE MONTH

PLEASE recruit all eligible patients when possible. This trial population should reflect the population in which we want to consider using CEP but we need to have evidence that it is effective.

Please try and recruit **all eligible patients** including for example, those with valve -in-valve TAVI, bicuspid valve, heavy calcium, arch atheroma, urgent cases. Remember we have no evidence that CEP is effective from any randomised trial and we therefore need a representative population to test this.



Expected recruitment target

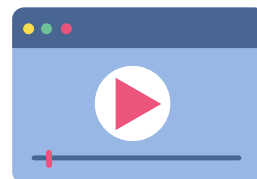
Bar chart above shows the total number of participants recruitment each month since the trial opened in October 2020.

ANIMATION

Our animated patient information video for the trial is now available to use.

The animation is available in 5 languages (English, Bengali, Polish, Hindi and Turkish) and can be accessed through the following address:

<https://www.explainmyprocedure.com/protecttavi/>



NEW SCREENING LOG

37% of participants enrolled in the BHF PROTECT-TAVI trial are women. However, according to BCIS 2019-2020 TAVI audit data, 45% of people having TAVIs are female. We've updated our screening log to collect screening data broken down by gender to examine this disparity in more detail.

Version 3 of the screening log is available to view and download on our SharePoint.

12 MONTH FOLLOW-UP

As a reminder, participants should not be contacted for the final 12 month follow-up until they have reached the 12 month post-TAVI mark. Follow-ups should be completed within 1 month of this time period.

NEW SITES

Welcome to the teams at **Bristol Heart Institute**, **Nottingham Hospital**, **Hammersmith Hospital**, **Wythenshawe Hospital** and **Castle Hill Hospital**.

We now have **24** open sites!

CONTACT US

For any queries you may have please email: bhfprotect-tavi@lshtm.ac.uk



@bhfprotect_tavi

