



# Methotrexate and Prednisolone study in Erythema Nodosum Leprosum

## MaPs in ENL

### Training session 9 – ENLIST ENL Severity Scale EESS

Dr. Barbara de Barros – MaPs study manager



# ENLIST ENL Severity Scale - EESS

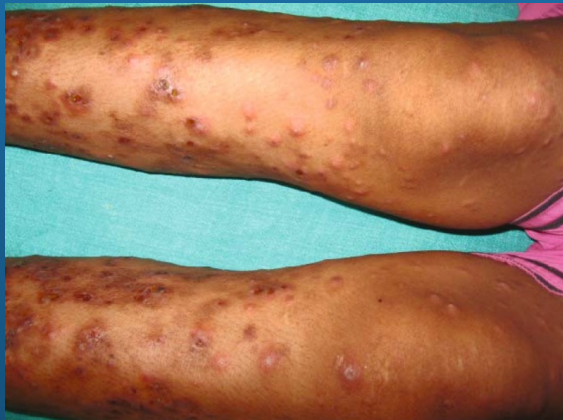
- **What is a severity scale?**
  - **Importance**
- **Each item and score**
- **Final total score**

# EESS

- **Standardised evaluation**
- **Monitoring treatment**
- **Evaluate recurrence of ENL**

# EESS

- 10 item scale
- Each item scores 0 to 3
- VAS is the visual analog scale to measure pain
- Fever
- Number
- Type of ENL lesions
  - Complex ENL skin lesions are vesicular, bullous, pustular, erythema multiform-like, panniculitis, necrotic, ulcerated



## ENLIST ENL Severity Scale

### Pain Rating - Visual Analogue Scale (Ensure line is 100 mm long)

How severe is your pain today? Mark the line below with an **X** to indicate how bad you feel your pain is *today*

No Pain

Worst possible  
Pain

ITEM	SCORES				SCORE
	0	1	2	3	
<b>1 VAS - Pain (mm)</b>	0	1-39	40-69	70-100	
<b>2 Fever (in °C)</b>	None (37.5 or less)	No fever now but history of fever and/or chills in last 7 days	37.6-38.5	38.6 or higher	
<b>3 Number of ENL skin lesions</b>	None	1-10	11-20	21 or more	
<b>4 Inflammation of ENL skin lesions</b>	Non tender	Redness	Painful	Complex	
<b>5 Extent of ENL skin lesions</b>	0	1-2 regions	3-4 regions	5-7 regions	
<b>6 Peripheral oedema</b>	None	1 site of Hands or Feet or Face	2 sites	All three sites (Hands and Feet and Face)	
<b>7 Bone pain</b>	None	Present on examination but does <b>not</b> limit activity	Sleep or activity disturbed	Incapacitating	
<b>8 Inflammation of Joints and/or digits due to ENL</b>	None	Present on examination but does <b>not</b> limit activity	Sleep or activity disturbed	Incapacitating	
<b>9 Lymphadenopathy due to ENL</b>	None	Enlarged	Pain or tenderness	Pain or tenderness in 2 or more groups	
<b>10 Nerve tenderness due to ENL</b>	None	Absent if attention distracted	Present even if attention distracted	Patient withdraws limb on examination	
<b>TOTAL</b>					

# EESS

- Extent of ENL skin lesions regions
  - Head and neck
  - Left upper limb
  - Right upper limb
  - Torso - front (including genitals)
  - Torso - back (including buttocks)
  - Left lower limb
  - Right lower limb
- Peripheral Oedema
  - Face
  - Hands
  - Feet
- Bone pain
- Inflammation of joints and/or digits due to ENL
- Nerve tenderness due to ENL

## ENLIST ENL Severity Scale

### Pain Rating - Visual Analogue Scale (Ensure line is 100 mm long)

How severe is your pain today? Mark the line below with an **X** to indicate how bad you feel your pain is *today*

No Pain

Worst possible  
Pain

ITEM		SCORES				SCORE
		0	1	2	3	
1	VAS - Pain (mm)	0	1-39	40-69	70-100	
2	Fever (in °C)	None ( 37.5 or less)	No fever now but history of fever and/or chills in last 7 days	37.6-38.5	38.6 or higher	
3	Number of ENL skin lesions	None	1-10	11-20	21 or more	
4	Inflammation of ENL skin lesions	Non tender	Redness	Painful	Complex	
5	Extent of ENL skin lesions	0	1-2 regions	3-4 regions	5-7 regions	
6	Peripheral oedema	None	1 site of Hands or Feet or Face	2 sites	All three sites (Hands and Feet and Face)	
7	Bone pain	None	Present on examination but does <b>not</b> limit activity	Sleep or activity disturbed	Incapacitating	
8	Inflammation of Joints and/or digits due to ENL	None	Present on examination but does <b>not</b> limit activity	Sleep or activity disturbed	Incapacitating	
9	Lymphadenopathy due to ENL	None	Enlarged	Pain or tenderness	Pain or tenderness in 2 or more groups	
10	Nerve tenderness due to ENL	None	Absent if attention distracted	Present even if attention distracted	Patient withdraws limb on examination	
<b>TOTAL</b>						

# EESS final score

- Range 0-30
- Difference of 5 occurs is a meaningful difference in ENL severity
- Scores 9 or more severe ENL
- Scores 8 or less mild ENL

## ENLIST ENL Severity Scale

### Pain Rating - Visual Analogue Scale (Ensure line is 100 mm long)

How severe is your pain today? Mark the line below with an **X** to indicate how bad you feel your pain is *today*

No Pain  **X**  Worst possible Pain

ITEM	SCORES				SCORE
	0	1	2	3	
<b>1 VAS - Pain (mm)</b>	0	1-39	40-69	70-100	<b>3</b>
<b>2 Fever (in °C)</b>	None (37.5 or less)	No fever now but history of fever and/or chills in last 7 days	37.6-38.5	38.6 or higher	<b>2</b>
<b>3 Number of ENL skin lesions</b>	None	1-10	11-20	21 or more	<b>3</b>
<b>4 Inflammation of ENL skin lesions</b>	Non tender	Redness	Painful	Complex	<b>2</b>
<b>5 Extent of ENL skin lesions</b>	0	1-2 regions	3-4 regions	5-7 regions	<b>2</b>
<b>6 Peripheral oedema</b>	None	1 site of Hands or Feet or Face	2 sites	All three sites (Hands and Feet and Face)	<b>2</b>
<b>7 Bone pain</b>	None	Present on examination but does <b>not</b> limit activity	Sleep or activity disturbed	Incapacitating	<b>3</b>
<b>8 Inflammation of Joints and/or digits due to ENL</b>	None	Present on examination but does <b>not</b> limit activity	Sleep or activity disturbed	Incapacitating	<b>1</b>
<b>9 Lymphadenopathy due to ENL</b>	None	Enlarged	Pain or tenderness	Pain or tenderness in 2 or more groups	<b>2</b>
<b>10 Nerve tenderness due to ENL</b>	None	Absent if attention distracted	Present even if attention distracted	Patient withdraws limb on examination	<b>1</b>
<b>TOTAL</b>					<b>21</b>

# Summary

- **EESS is a fundamental tool in MaPs**
- **10 item scale**
- **Range 0-30**
- **9 or more is severe ENL**
- **A difference of 5 is meaningful**
- **Outcome measure**